

ENVISION™

Low Sill Console 0.75 to 1.5 Ton
Geothermal/Water Source Heat Pump

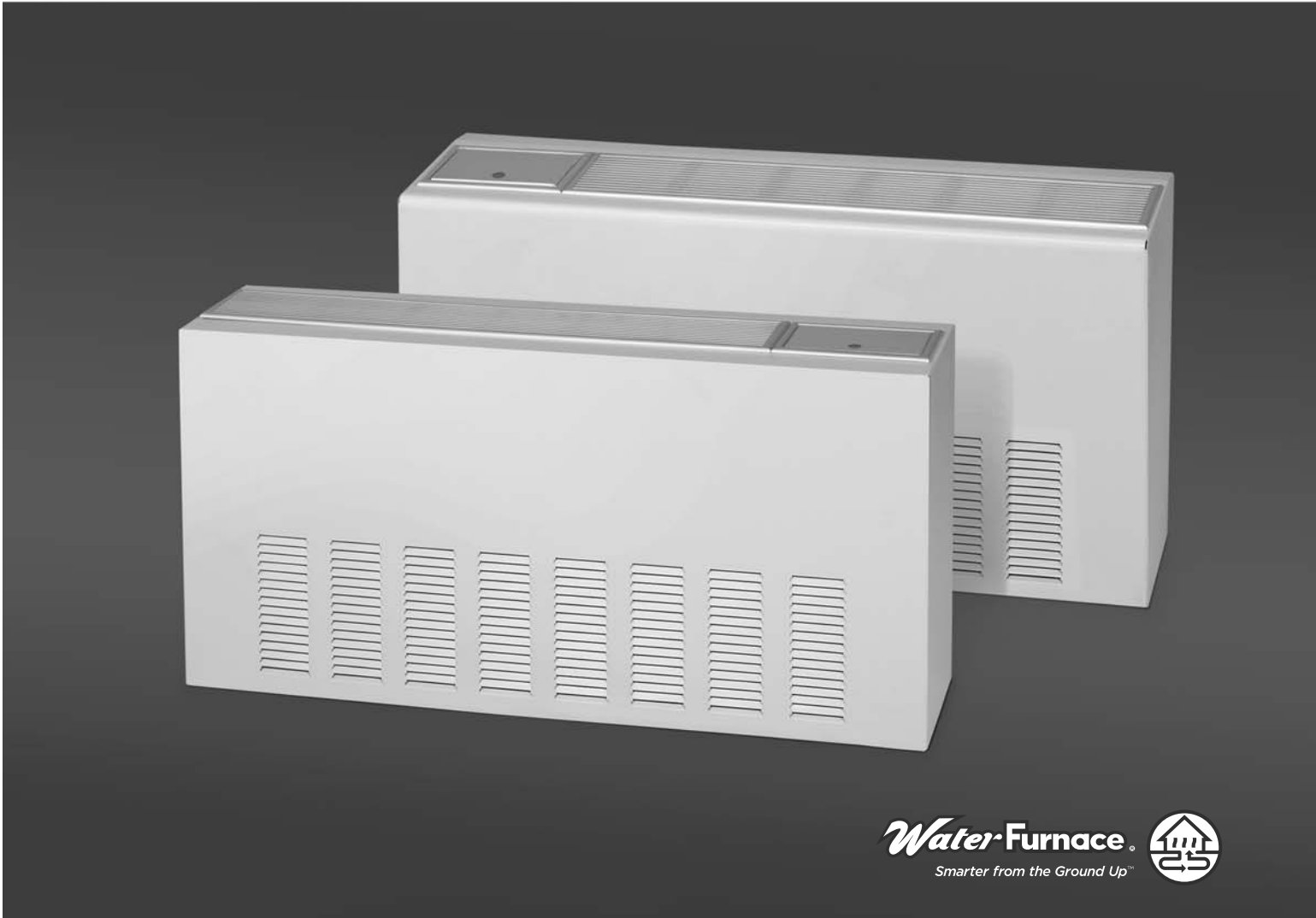
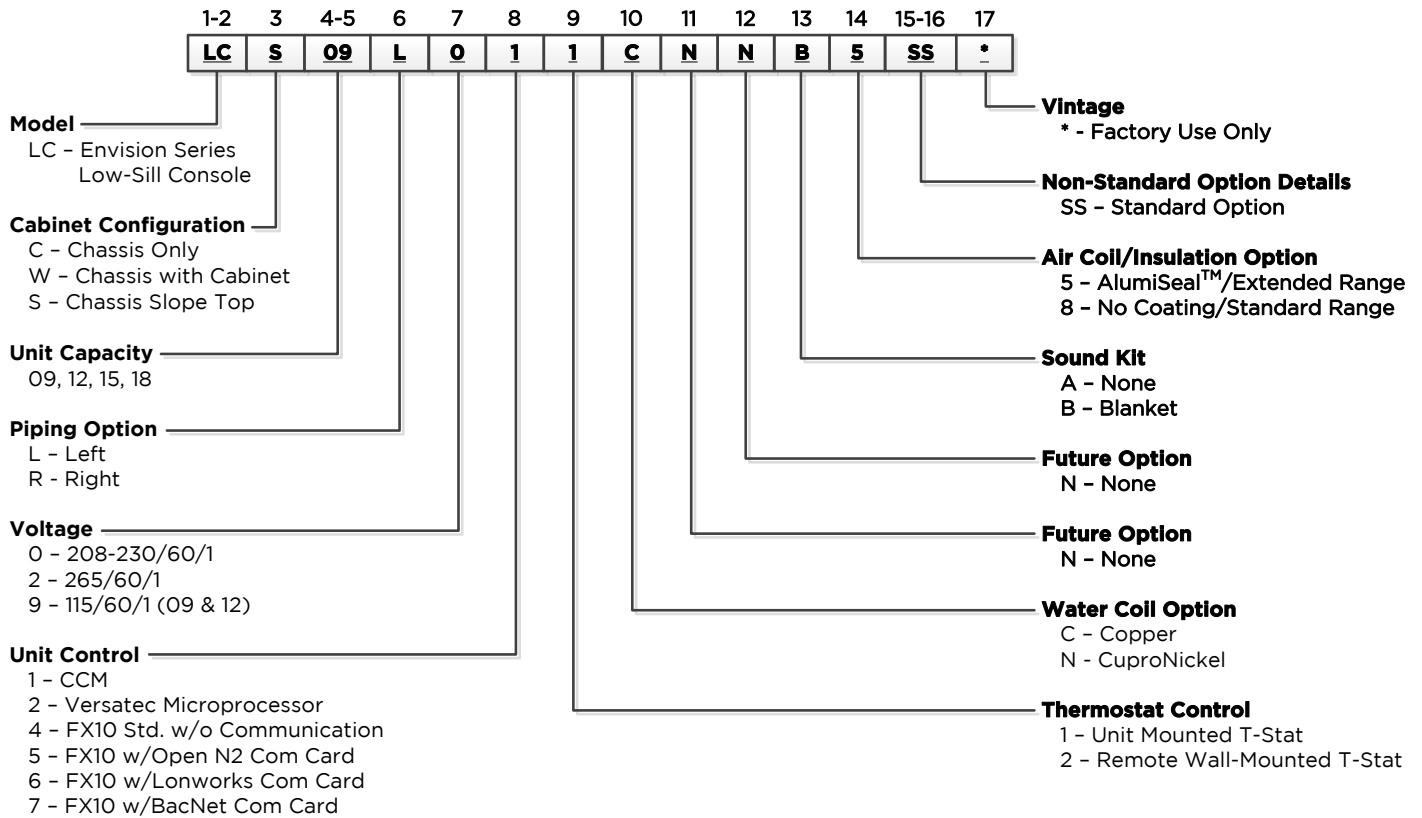


Table of Contents

Model Nomenclature	4
AHRI Data.....	5-6
The Envision Series Low Sill Console	7
Inside the Envision Series Low Sill Console.....	8
Controls	9-15
Application Notes.....	16-18
Water Quality	18
Installation Notes	19
Dimensional Data	20-23
Physical Data.....	24
Blower Performance Data.....	25
Electrical Data	25
Pressure Drop	25
Antifreeze Corrections.....	26
Correction Factor Tables.....	26
Operating Limits.....	27
Reference Calculations	27
Legend and Notes	27
Performance Data.....	28-31
Wiring Schematics.....	32-38
Engineering Guide Specifications	39-40
Revision Guide.....	42

Model Nomenclature



Rev.: 02 March 2014D

NOTES: Chassis only available with left piping option.
 FX10 option is only available with remote wall-mounted thermostat control.
 09-12 only available with PSC blower.
 15-18 only available with 3-Speed ECM blower.

AHRI Data

PSC/ECM Motors

AHRI/ASHRAE/ISO 13256-1

English (IP) Units

Model	Flow Rate		Water Loop Heat Pump				Ground Water Heat Pump				Ground Loop Heat Pump			
			Cooling EWT 86°F		Heating EWT 68°F		Cooling EWT 59°F		Heating EWT 50°F		Cooling EWT 77°F		Heating EWT 32°F	
	GPM	CFM	Capacity Btuh	EER Btuh/W	Capacity Btuh	COP	Capacity Btuh	EER Btuh/W	Capacity Btuh	COP	Capacity Btuh	EER Btuh/W	Capacity Btuh	COP
09	2.5	300	8,700	12.2	11,400	4.3	10,000	18.6	9,200	3.7	9,500	14.0	7,200	2.9
12	3.5	340	10,900	12.2	14,700	4.3	12,700	17.9	11,800	3.7	11,500	13.5	9,400	2.9
15	4.5	450	13,300	12.2	17,500	4.4	16,200	19.0	14,300	3.8	14,200	14.3	10,600	3.0
18	5.5	500	16,200	12.2	20,500	4.3	19,000	18.5	17,000	3.7	17,000	13.9	12,700	2.8

Cooling capacities based upon 80.6°F DB, 66.2°F WB entering air temperature

Heating capacities based upon 68°F DB, 59°F WB entering air temperature

All ratings based upon 208V operation.

6/10/13

Voltage Availability

Voltage	Low Sill Console			
	09	12	15	18
115/60/1	•	•		
208-230/60/1	•	•	•	•
265/60/1	•	•	•	•

6/10/13



All Envision Series product is Safety listed under UL1995 thru ETL and performance listed with AHRI in accordance with standard 13256-1.

AHRI Data cont.

The performance standard AHRI/ASHRAE/ISO 13256-1 became effective January 1, 2000 and replaces ARI Standards 320, 325, and 330. This new standard has three major categories: Water Loop (comparable to ARI 320), Ground Water (ARI 325), and Ground Loop (ARI 330). Although these standards are similar there are some differences:

Unit of Measure: The Cooling COP

The cooling efficiency is measured in EER (US version measured in Btuh per Watt. The Metric version is measured in a cooling COP (Watt per Watt) similar to the traditional COP measurement.

Water Conditions Differences

Entering water temperatures have changed to reflect the centigrade temperature scale. For instance the water loop heating test is performed with 68°F (20°C) water rounded down from the old 70°F (21.1°C).

Air Conditions Differences

Entering air temperatures have also changed (rounded down) to reflect the centigrade temperature scale. For instance the cooling tests are performed with 80.6°F (27°C) dry bulb and 66.2°F (19°C) wet bulb entering air instead of the traditional 80°F (26.7°C) DB and 67°F (19.4°C) WB entering air temperatures. 80.6/66.2 data may be converted to 80/67 using the entering air correction table. This represents a significantly lower relative humidity than the old 80/67 of 50% and will result in lower latent capacities.

Pump Power Correction Calculation

Within each model, only one water flow rate is specified for all three groups and pumping Watts are calculated using the following formula. This additional power is added onto the existing power consumption.

- Pump power correction = (gpm x 0.0631) x (Press Drop x 2990) / 300

Where 'gpm' is waterflow in gpm and 'Press Drop' is the pressure drop through the unit heat exchanger at rated water flow in feet of head.

Blower Power Correction Calculation

Blower power is corrected to zero external static pressure using the following equation. The nominal airflow is rated at a specific external static pressure. This effectively reduces the power consumption of the unit and increases cooling capacity but decreases heating capacity. These Watts are significant enough in most cases to increase EER and COPs fairly dramatically over ARI 320, 325, and 330 ratings.

- Blower Power Correction = (cfm x 0.472) x (esp x 249) / 300

Where 'cfm' is airflow in cfm and 'esp' is the external static pressure at rated airflow in inches of water gauge.

ISO Capacity and Efficiency Calculations

The following equations illustrate cooling calculations:

- ISO Cooling Capacity = Cooling Capacity (Btuh) + (Blower Power Correction (Watts) x 3.412)

- ISO EER Efficiency (W/W) = ISO Cooling Capacity (Btuh) x 3.412 / [Power Input (Watts) - Blower Power Correction (Watts) + Pump Power Correction (Watt)]

The following equations illustrate heating calculations:

- ISO Heating Capacity = Heating Capacity (Btuh) - (Blower Power Correction (Watts) x 3.412)

- ISO COP Efficiency (W/W) = ISO Heating Capacity (Btuh) x 3.412 / [Power Input (Watts) - Blower Power Correction (Watts) + Pump Power Correction (Watt)]

Comparison of Test Conditions

	ARI 320	ISO/AHRI 13256-1 WLHP	ARI 325	ISO/AHRI 13256-1 GWHP	ARI 330	ISO/AHRI 13256-1 GLHP
Cooling						
Entering Air - DB/WB °F	80/67	80.6/66.2	80/67	80.6/66.2	80/67	80.6/66.2
Entering Water - °F	85	86	50/70	59	77	77
Fluid Flow Rate	*	**	**	**	**	**
Heating						
Entering Air - DB/WB °F	70	68	70	68	70	68
Entering Water - °F	70	68	50/70	50	32	32
Fluid Flow Rate	*	**	**	**	**	**

Note *: Flow rate is set by 10°F rise in standard cooling test Part load entering water conditions not shown.

Note **: Flow rate is specified by the manufacturer

WLHP = Water Loop Heat Pump; GWHP = Ground Water Heat Pump; GLHP = Ground Loop Heat Pump

Conversions:

Airflow (lps) = cfm x 0.472;

WaterFlow (lps) = gpm x 0.0631;

ESP (Pascals) = ESP (in wg) x 249;

Press Drop (Pascals) = Press Drop (ft hd) x 2990

The Envision Series Low Sill Console

Standard Features

- Slope and Flat top configurations
- Footprint matches “legacy” products for easy retrofits.
- Attractive rounded corners heavy gauge cabinet.
- Quiet rotary compressors in all models.
- 2-dimension refrigerant piping vibration loops to isolate the compressor.
- All interior cabinet surfaces including the compressor compartment are insulated with 1/2 in. [12.7mm] thick 1-1/2lb [681g] density, surface coated, acoustic type glass fiber insulation.

Flexible Control Options

The **standard CCM** (compressor control module) is a more reliable replacement for electro-mechanical control applications. It features a small microprocessor board that handles the lockout function of the unit. A second microprocessor handles the unit mounted dial thermostat for maintaining accurate room temperature. Thermostat options include unit mounted or remote thermostat.

The **optional Versatec** microprocessor control board provides complete monitoring and control with optional field monitoring fault, status and I/O LED indication for easy servicing. The Versatec features a robust microprocessor control that monitors LP, HP, Condensate, field selectable thermistor freeze detection, while providing a flexible accessory relay and fault output scheme. Thermostat options include unit mounted or remote thermostat.

The **optional FX10** control provides unparalleled capability in several areas including performance monitoring, zoning, humidity, energy management, and service diagnosis, and then communicates it all thru standard DDC protocols like N2, Lon and BACnet (MS/TP @ 19,200 Baud rate).

The most unique feature is integrating the FX10 into the Envision Series as both the heat pump and DDC controller providing both a cost advantage and features not typically found on WLHP controls. This integration allows heat pump monitoring sensors, status and service diagnosis faults to be communicated thru the DDC direct to the building automation system (BAS), giving building supervisors detailed and accurate information on every piece of

equipment without removing an access panel. Thermostat options include unit mounted sensor or remote sensor or remote thermostat.



CCM

VERSATEC

FX10

Optional user interface for diagnostics and commissioning of FX controls.



Easy Maintenance and Service Advantages

- Removable compressor access panel
- High and low pressure refrigerant service ports.
- Internal slide out blowers.

Factory Quality

- All refrigerant brazing is performed in a nitrogen environment.
- Computer controlled deep vacuum and refrigerant charging system.
- All joints are leak detected for maximum leak rate of less than 1/4 oz. per year.
- Computer bar code equipped assembly line insures all components are correct.
- All units are computer run-tested with water to verify both function and performance.

Envision Series Low Sill Console Models

- LCC 09-18 (3/4-1.5 tons) Chassis only
- LCW 09-18 (3/4-1.5 tons) Flat top cabinet
- LCS 09-18 (3/4-1.5 tons) Slope top cabinet



Inside the Envision Series Low Sill Console

Refrigerant

Envision products all feature zero ozone depletion and low global warming potential refrigerant R-410A.

Cabinet

All units are all constructed of corrosion resistant galvanized sheet metal with polyester powder coat paint rated for more than 1000 hours of salt spray. Refrigerant circuit is designed to allow primary serviceability from the front. One access panel allows servicing of the blower motor, blower, and drain pan. Cabinet is designed to match "industry" foot print for ease of replacement.

Drain Pan

All condensate connections are welded stainless steel tubes for economical corrosion free connections. Bacteria resistant stainless steel drain pan is designed to promote complete drainage and will never rust or corrode. Complete drainage helps to inhibit bacterial or microbial growth. Units feature an internally trapped condensate line.

Compressors

High efficiency R-410A rotary compressors are used on every model. Rotary compressors provide both the highest efficiency available and great reliability.

Electrical Box

Unit controls feature quick connect wiring harnesses for easy servicing. Large 50VA transformer assures adequate controls power for accessories.

Thermostatic Expansion Valve

All Envision models utilize a balanced port bi-directional thermostatic expansion valve (TXV) for refrigerant metering. This allows precise refrigerant flow in a wide range of entering water variation (20 to 120°F [-7 to 49 °C]) found in geothermal systems.



Water to Refrigerant Coaxial Heat Exchanger Coil

Large oversized coaxial refrigerant to water heat exchangers provide unparalleled efficiency. The coaxes are designed for low pressure drop and low flow rates. All coaxes are pressure rated to 450 psi water side and 600 psi on the refrigerant side. Optional ThermaShield coated water-to-refrigerant coaxial heat exchanger is available to prevent condensation in low temperature loop operation.



Service Connections and Serviceability

Two Schrader service ports are provided in every unit. The suction side and discharge side ports are for field charging and servicing access. All valves are 7/16 in. SAE connections. All water and electrical connections are made from the front of the unit. Unit is designed for front access serviceability.



4-Way Reversing Valve

Envision units feature a reliable all-brass pilot operated refrigerant reversing valve. The reversing valve operation is limited to change of mode by the control to enhance reliability. (Versatec and FX10 Only).









3-Speed ECM Constant Torque Motors

The 3-speed ECM is a 'Constant Torque' ECM motor and delivers air flow similar to a PSC but operates as efficiently as a variable speed ECM motor. Because it is an ECM motor, the 3-speed ECM can ramp slowly up or down like the variable speed ECM motor. There are 3 possible speed taps available on the 3-speed ECM motor with #1 being the lowest airflow and #3 being the highest airflow. These speed selections are preset at the time of manufacture and are easily changed in the field if necessary.

NEW!: All-Aluminum Air Coil

Beginning in Spring of 2014, all models in the Envision Low Sill Console line began shipping with all-aluminum air coils. WaterFurnace is the first manufacturer to offer an all-aluminum round-tube-and-fin air coil in a packaged water source heat pump. These air coils are constructed of lanced fin and rifled tube aluminum that is not susceptible to formicary corrosion. For additional condensate runoff and meeting project specifications, an optional AlumiSeal e-coating is available.

Controls

Control	General Description	Application	Display/Interface	Protocol	Thermostat Options
 <p>CCM Control</p>	<p>The CCM (Compressor control module) is a more reliable replacement for electro-mechanical control applications. It features a small microprocessor board that handles the lockout function of the unit. A second microprocessor handles the unit mounted thermostat for maintaining accurate room temperature.</p>	<p>Residential and commercial applications requiring minimal but reliable controls. Includes Random Start, High and low pressure switches and auto changeover capability.</p>	<p>Dial thermostat with Hi and Low blower speeds, and auto changeover or continuous blower selection switches.</p>	<p>None</p>	Unit Mounted Digital Dial Thermostat
					Remote Mounted Standard Thermostat
 <p>Versatec Control</p>	<p>The Versatec Control is a microprocessor based board that adds the features of emergency shutdown (ES), water freeze detection (FD) and condensate overflow (CO). The Versatec Control also features Optional Field servicing LEDs for mode, Fault and diagnostic indication.</p>	<p>Residential and commercial applications requiring more controls features than CCM and Includes Random Start, High and low pressure switches, auto changeover capability, emergency shutdown (ES), water freeze detection (FD), and condensate overflow (CO).</p>	<p>Optional field servicing LED board for mode, fault and diagnostic indication</p>	<p>None</p>	Unit Mounted Digital Dial Thermostat
					Remote Mounted Standard Thermostat
 <p>FX10</p>	<p>The FX10 microprocessor control is self contained control featuring LP, LOC, HP, LWT, and condensate overflow fault modes can be displayed on BAS system. Optional handheld Medium User Interface (MUI) Control can be used for additional setup or servicing. Program customization is possible. This control is suited for both single and dual capacity compressors as well as PSC and ECM2.3 blower motors.</p>	<p>Commercial applications using single and dual capacity compressors with either PSC or ECM2.3 blower motors. Also suitable for multi-compressor products. Cannot be integrated with centralized building automation systems. Software can be customized for specific projects.</p>	<p>Optional Medium User Interface (MUI) can be used as a field service tool.</p>	<p>Standalone</p>	Remote Mounted Standard Thermostat
					Remote Mounted Sensor
 <p>FX10 w/ N2</p>	<p>FX10 Control functions as both unitary heat pump control and DDC communication, therefore detail operational and fault information is available to BAS. Other features are same as FX10 with addition of Johnson Controls N2 compatibility.</p>	<p>Same as FX10 with Johnson Controls N2 BAS compatibility.</p>	<p>Optional Medium User Interface (MUI) can be used as a field service tool.</p>	<p>Johnson Controls N2 network</p>	Remote Mounted Standard Thermostat
					Remote Mounted Sensor
 <p>FX10 w/ LonWorks</p>	<p>FX10 Control functions as both unitary heat pump control and DDC communication, therefore detail operational and fault information is available to BAS. Other features are same as FX10 with addition of LonWorks compatibility.</p>	<p>Same as FX10 with LonWorks BAS compatibility.</p>	<p>Optional Medium User Interface (MUI) can be used as a field service tool.</p>	<p>LonWorks</p>	Remote Mounted Standard Thermostat
					Remote Mounted Sensor
 <p>FX10 w/ BACnet</p>	<p>FX10 Control functions as both unitary heat pump control and DDC communication, therefore detail operational and fault information is available to BAS. Other features are same as FX10 with addition of BACnet compatibility.</p>	<p>Same as FX10 with BACnet BAS compatibility.</p>	<p>Optional Medium User Interface (MUI) can be mounted or used as a field service tool.</p>	<p>BACnet - MS/TP (19,200 Baud Rate)</p>	Remote Mounted Standard Thermostat
		<p>Due to communication speed, no more than 30 units should be connected to a single trunk of the network.</p>			Remote Mounted Sensor

Standard CCM Control Features

Compressor control module (CCM) controls are standard on the Envision Series Low Sill Console heat pump. This control features unit mounted thermostat and switches, Features of the standard control are:

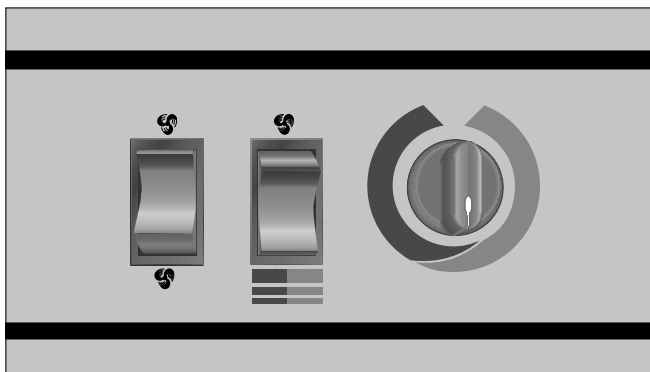
- Easy to understand color coded thermostat adjustment markings.
- Large, rocker type mode and blower switches.

- Internally mounted blower switch to choose cycled or constant blower operation.
- High pressure and low pressure safety controls to protect the unit components.
- Lockout circuit to shut down unit operation upon receipt of a fault indicator from the safety controls.
- A 24 volt control circuit allows for safe and easy diagnosis.

Controls cont.

The user selects either “Heat/Cool” or “Fan Only” on the mode switch, then either “High” or “Low” at the blower speed switch. The temperature can be controlled by rotating the thermostat control knob.

Unit Mounted Control



The “Fan Only” setting provides constant blower operation.

In the “Heat” mode, a call for heat by the thermostat closes the compressor contactor contacts, energizing the compressor, which will run until the thermostat is satisfied.

In the “Cool” mode, a call for cooling by the thermostat energizes the reversing valve and closes the compressor contactor contacts, energizing the compressor, which will run until the thermostat is satisfied.

If either the low or high pressure safety switches are opened, the compressor and reversing valve are disabled by the lockout relay. Unit operation will resume only after the voltage to the unit is interrupted or the mode switch is placed in the “Off” position.

Optional Versatec Microprocessor Control Features

The Versatec microprocessor board provides control of the entire unit as well as outputs for status modes, faults and diagnostics. The control system is a microprocessor-based control board that is located in the unit control box. This feature is available for either unit mounted controls or optional remote wall mounted thermostat. A 9-pin low voltage terminal strip provides all necessary terminals for the wall mounted thermostat.

Startup

The unit will not operate until all the inputs and safety controls are checked for normal operating conditions.

Fault Retry

All faults are retried twice before finally locking the unit out to prevent nuisance service calls.

Component Sequencing Delays

Components are sequenced and delayed for optimum unit performance.

Emergency Shutdown

A grounded signal to common or connecting 24 VAC to the ES terminal places the controller into the emergency shutdown mode. The compressor and blower operation are suspended while in the emergency shutdown mode.

Condensate Overflow Protection

The board incorporates an impedance liquid sensor at the top of the condensate drain pan. Upon a continuous 30-second sensing of the condensate, the cooling operation of the unit is suspended.

Safety Controls

The microprocessor board receives separate signals from a high pressure switch for safety, a low pressure switch to prevent loss of refrigerant charge and a low suction temperature thermistor for freeze detection. Upon a continuous 30-second measurement of the fault (immediate for high pressure), compressor operation is stopped.

Controls cont.

Control Tables for Optional Versatec Microprocessor

Logic Board DIP Switch Settings

Switch	OFF	ON
SW1 - 1	Test - Selected timings sped up to facilitate troubleshooting	Normal - Standard timings
SW1 - 2	Loop - Closed loop freeze detection setting (15°F)	Well - Open loop freeze detection setting (30°F)
SW1 - 3	Commercial - Enables NS features when TA32U02 thermostat is used	Normal - Standard thermostat operation
SW1 - 4	IO Display* - Enables Input/Output display on external LED board	Normal* - Unit status display
SW1 - 5	Configures board for 2-speed compressor without blower	Configures board for 2-speed compressor with blower

Normal Control Timing

Blower off delay	30 seconds
Compressor on delay	10 seconds
Short cycle delay	5 minutes
Minimum compressor on time	2 minutes (except for fault condition)
High pressure fault recognition delay	Less than 1 second
Low pressure fault recognition delay	30 seconds
Freeze detection fault recognition delay	30 seconds
Condensate overflow fault recognition delay	30 seconds
Low pressure fault bypass delay	2 minutes
Freeze detection fault bypass delay	2 minutes
Power on delay	5 minutes

Operational Logic

Mode	Inputs	Blower	Comp	RV
Htg	Y	ON	ON	OFF
Clg	Y,O	ON	ON	ON
Blower	G	ON	OFF	OFF

Test Control Timing

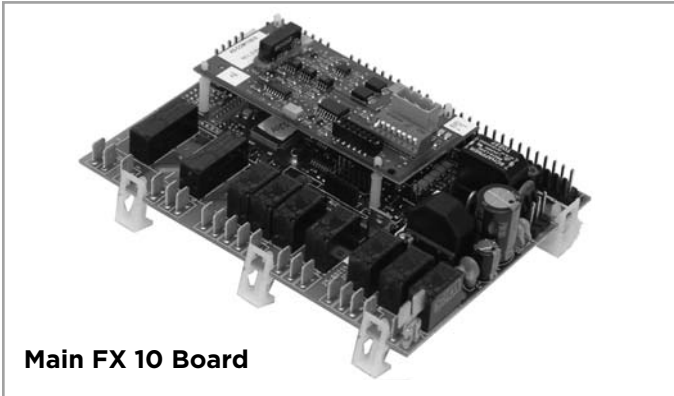
Blower off delay	5 seconds
Compressor on delay	2 seconds
Short cycle delay	15 seconds
Minimum compressor on time	5 seconds (except for fault condition)
High pressure fault recognition delay	Less than 1 second
Low pressure fault recognition delay	30 seconds
Freeze detection fault recognition delay	30 seconds
Condensate overflow fault recognition delay	30 seconds
Low pressure fault bypass delay	0 seconds
Freeze detection fault bypass delay	0 seconds
Power on delay	15 seconds
Fault off time	5 minutes

Diagnostic Modes

LED	Current Fault Status SW1 - #4 On, SW2 On	Inputs SW1 - #4 Off, SW2 Off	Outputs SW1 - #4 Off, SW2 On
Drain	Drain pan overflow	Y	Compressor
Water Flow	FD thermistor (loop <15°F, well <30°F)	G	Blower
High Press	High pressure >600 psi	O	O
Low Press	Low pressure <40 psi	ES	ES
Air Flow	Not used	Not Used	Not Used
Status	Not used	Not Used	Not Used
DHW Limit	Not used	Not used	Not used
HWD	SW2 in the On position	Off position	On position

Controls cont.

Optional FX10 Control



The optional FX10 control provides unparalleled capability in several areas including performance monitoring, zoning, humidity, energy management, and service diagnosis, and then communicates it all thru standard DDC protocols like N2, Lon and BACnet (MS/TP @ 19,200 Baud rate).

The most unique feature is integrating the FX10 into the Envision series as both the heat pump and DDC controller providing both a cost advantage and providing features not typically found on WLHP controls. This integration allows heat pump monitoring sensors, status and service diagnosis faults to be communicated thru the DDC direct to the building automation system (BAS), giving building supervisors detailed and accurate information on every piece of equipment without removing an access panel.

FX10 Advanced Control Overview

The Johnson Controls FX10 board is specifically designed for commercial heat pumps and provides control of the entire unit as well as input ports for Open N2, LonTalk, BACnet (MS/TP @ 19,200 Baud rate) communication protocols as well as an input port for a user interface. The user interface is an accessory item that can be used to aid in diagnostics and unit setup. A 16-pin low voltage terminal board provides terminals for common field connections. The FX10 Control provides:

- Operational sequencing
- High and low-pressure switch monitoring
- General lockout
- Freeze detection
- Condensate overflow sensing
- Lockout mode control
- Emergency shutdown mode
- Random start and short cycle protection

Short Cycle Protection

Allows a minimum compressor “off” time of four minutes and a minimum “on” time of two minutes.

Random Start

A delay of 1 to 120 seconds is generated after each power-up to prevent simultaneous startup of all units within a building after the release from an unoccupied cycle or power loss.

Emergency Shutdown

A field-applied dry contact can be used to place the control into emergency shutdown mode. During this mode, all outputs on the board are disabled.

Freeze Detection Limit

Field selectable for 15° or 30°F (-9° or -1°C)

Installation Options

- Standalone controlled by standard room thermostat
- Standalone with a Zone Temperature Sensor (must have user interface to change set points beyond the allowed +/- 5°F)
- Integrated into BAS by adding communication module

Accessory Outputs

Quantity 2. One cycled with blower, other with compressor.

User Interface

4 x 20 backlit LCD.

Optional Plug-in Communication Modules - (compatible with standard BAS protocols)

- Open N2
- LonTalk
- BACnet (MS/TP @ 19,200 Baud rate)

Display

Requires DLI Card/Kit. Up to 2 displays, either 1 local and 1 remote, or 2 remote. (A 2-display configuration requires identical displays.) Local display can be up to 3 meters from the controller, power supply, and data communication. Remote display can be up to 300 meters from the controller. Remote display must be independently powered with data communication done via 3 pole shielded cable.

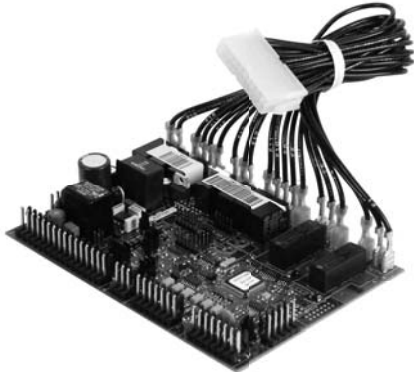
Control Timing & Fault Recognition Delays

Lead compressor “ON” delay.....	90 seconds
(not applicable for single compressor models)	
Minimum compressor “ON” time	2 minutes
(except for fault condition)	
Short cycle delay.....	5 minutes
Random start delay.....	0-120 seconds
High pressure fault	<1 second
Low pressure fault	30 seconds
Freeze detection fault.....	30 seconds

Controls cont.

Condensate overflow fault	30 seconds
Low pressure fault bypass	2 minutes
Freeze detection fault bypass.....	2 minutes

Optional FX10 Microprocessor and BAS Interface



The FX10 is a microprocessor based control that not only monitors and controls the heat pump but also can communicate any of this information back to the building automation system (BAS). This means that not only does the control monitor the heat pump at the unit you can also monitor and control many the features over the BAS. This clearly puts the FX10 in a class of its own.

The control will enumerate all fault conditions (HP, LP, CO, LOC, and Freeze Detection) over a BAS as well as display them on a medium user interface (MUI). HP, LP, CO and Freeze Detection faults can all be reset over a BAS. A Loss Of Charge fault can not be reset or bypassed until the problem has been corrected. A MUI is invaluable as a service tool for the building service team.

The unit can be commanded to run by a typical heat pump thermostat or run based on heating and cooling set points supplied by a BAS. The control board is wired with quick connect harnesses for easy field change out of a bad control board. An alarm history can be viewed through the MUI and will be held in memory until the unit is power cycled. Relative humidity can be read by a 0-5VDC humidity sensor that is displayed over the network.

The FX10 control has unused analog and digital inputs for field installed items such as air temperature, water temperature, CO² or current status switches. The control has unused binary and PWM outputs that can be commanded over the BAS for field use. An optional Medium User Interface (MUI) for control setup and advanced diagnostics is available with some mounting kits, MUIK3 - Panel mount version and the MUIK4 - Wall mount version.

Zone Sensors

There are two options for zone sensors that can be used with the FX10 control. Both sensors use a Johnson controls A99 positive temperature coefficient type sensor. The TAXXJ02 has a set point adjustment now which will give the end user a +/- 5°F adjustment from the set point as well as a push button that can be used for temporary occupancy. The control leaves the factory set to operate with a TAXXJ02 sensor and can be changed to read the TAXXA04 sensor through a building automation system or with a user interface.

Standard Features

- Anti Short Cycle
- High Pressure Protection
- Low Pressure Protection
- Freeze Detection
- Loss Of Charge Detection
- Random Start
- Display for diagnostics
- Reset Lockout at disconnect or through BAS
- 2 Accessory outputs
- Optional BAS add-on controls

DDC Operation and Connection

Other optional network protocol boards that can be added to the FX10 are:

- Johnson Control N2
- LonWorks
- BACnet
 - MS/TP @ 19,200 Baud rate
 - Limit devices to 30 on a single trunk line.

Control and Safety Feature Details

Emergency Shutdown

The emergency shutdown mode can be activated by a command from a facility management system or a closed contact on BI-2. The default state for the emergency shutdown data point is off. When the emergency shutdown mode is activated, all outputs will be turned off immediately and will remain off until the emergency shutdown mode is de-activated. The first time the compressor starts after the emergency shutdown mode has been de-activated, there will be a random start delay present.

Lockout Mode

Lockout mode can be activated by any of the following fault signals: refrigerant system high pressure, refrigerant system low pressure, freeze detection, and condensate overflow. When any valid fault signal remains continuously active for the length of its recognition delay, the controller will go into fault retry mode, which will turn off the compressor. After the Compressor short cycle delay, the compressor will attempt to operate once again. If three

Controls cont.

consecutive faults occur in 60 minutes during a single heating or cooling demand, the unit will go into lockout mode, turning off the compressor, and enabling the alarm output until the controller is reset. If the control faults due to the low pressure input (BI-3) being open during the pre-compressor startup check, the control will go into lockout mode immediately, disabling the compressor from starting and enabling the alarm output (BO-6). The lockout condition can be reset by powering down the controller, by a command from the BAS, or by the holding the ESC and Return keys on the MUI for 5 seconds.

Freeze Detection Limit (AI-5)

The freeze detection limit sensor will monitor the liquid refrigerant temperature entering the water coil in the heating mode. If the temperature drops below the freeze detection limit trip point for the recognition delay period, the condition will be recognized as a fault. The freeze detection limit trip point will be factory set for 30°F and will be field selectable for 15°F by removing a jumper wire on BI-5. The freeze detection limit fault condition will be bypassed 2 minutes at normal compressor startup, to allow the refrigeration circuit to stabilize. If the freeze detection limit sensor becomes unreliable at any time compressor operation will immediately be suspended until the problem is corrected. This should be displayed as an alarm on the BAS and the MUI. This alarm will be reported a "Water Low Temp Limit" fault.

High Pressure (BI-11)

The high-pressure switch shall be a normally closed (NC) switch that monitors the systems refrigerant pressure. If the input senses the high-pressure switch is open it must disable the compressor output immediately and count the fault. The compressor minimum on time does not apply if the high-pressure switch opens. The compressor will not restart until the compressor short cycle time delay has been satisfied.

Low Pressure (BI-3)

The low-pressure switch shall be a normally closed (NC) switch that monitors the systems refrigerant pressure. The input shall be checked 15 seconds before compressor start up to be sure the pressure switch is closed and then ignored for the first 2 minutes after the compressor output (BO-2) is enabled. If the switch is open continuously for (30) seconds during compressor operation the compressor output (BO-2) will be disabled. The compressor will not restart until the compressor short cycle time delay has been satisfied.

Condensate Overflow

The condensate overflow sensing circuit will monitor the condensate level as a resistance input to AI-3. If the condensate water level rises resulting in the input resistance rising above the set point for the recognition delay period, the condition will be recognized as a fault. The condensate

will be subjected to a (30) second lockout delay which requires that the fault be sensed for a continuous (30) seconds before suspending unit operation.

Alarm Output (BO-6)

The alarm output will be enabled when the control is in the lockout mode and will be disabled when the lockout is reset.

Test Mode

Raising the zone temperature input (AI-1) reading to 180–220°F or by holding the ESC and down arrow keys on the MUI for 5 seconds will put the control into test mode. In test mode the random start delay and the compressor fixed on delay time will both be shortened to 5 seconds and the reversing valve will be allowed to cycle with out shutting down the compressor. If an MUI is connected to the control LED 8 will flash and the words "Test Mode Enabled" will be shown on the LCD display when the control is in test mode. Test mode will be disabled after a power cycle, 30 minute timeout, or by holding the ESC and Up arrow keys on the MUI.

Sequence of Operation

Power Fail Restart

When the controller is first powered up, the outputs will be disabled for a random start delay. The delay is provided to prevent simultaneous starting of multiple heat pumps. Once the timer expires, the controller will operate normally.

Random Start Delay

This delay will be used after every power failure, as well as the first time the compressor is started after the control exits the unoccupied mode or the emergency shutdown mode. The delay should not be less than 1 second and not longer than 120 seconds. If the control is in test mode the random start delay will be shortened to 5 seconds.

Compressor Fixed On Delay Time

The Compressor Fixed On Delay Time will ensure that the compressor output (B02) is not enabled for (90) seconds after the control receives a call to start the compressor. This delay is adjustable from 30 – 300 seconds over a BAS or a MUI. If the control is in test mode the Compressor Fixed On Delay Timer will be shortened to 5 seconds.



Controls cont.

Compressor Minimum On Delay

The compressor minimum on delay will ensure that the compressor output is enabled for a minimum of (2) minute each time the compressor output is enabled. This will apply in every instance except in the event the high pressure switch is tripped or emergency shutdown then the compressor output will be disable immediately.

Compressor Short Cycle Delay Time

The compressor short cycle time delay will ensure that the compressor output will not be enabled for a minimum of (5) minutes after it is disabled. This allows for the system refrigerant pressures to equalize after the compressor is disabled.

Heating Cycle

On a call for heating, the blower enable output and accessory output 2 will turn on immediately after the random start delay timer has been satisfied. If the compressor short cycle time delay has been satisfied, the compressor will turn on after the blower enable and accessory output 2 are on and the fixed compressor start delay timers have been satisfied.

Cooling Cycle

On a call for cooling, the blower enable output and accessory output 2 will turn on immediately after the random start delay timer has been satisfied. If the compressor short cycle time delay has been satisfied, the compressor will turn on after the blower enable and accessory output 2 are on and the fixed compressor start delay timers have been satisfied.

MUI Alarm History Reporting

If a fault occurs the fault will be recorded in history for display on the medium user interface in the History Menu. Each fault type will be displayed in the history menu with a number between 0 and 3. A reading of 3+ will mean that fault has occurred more than three times in the past. The history menu can be cleared with a power cycle only. Alarm date and time are not included in the history.

Inputs and Outputs Configuration Field Selectable Options

Freeze Detection Limit Set Point (BI-5)

The freeze detection limit set point input allows you to adjust the freeze detection limit set point (AI-5). When the jumper is installed on BI-5 (Wire #24) the freeze detection limit set point is factory set for 30°F. When the jumper on BI-5 (Wire #24) is removed the freeze detection limit set point will be 15°F.

Accessory Outputs (BO-7 and BO-8)

Accessory Output 1 will be energized 90 seconds prior to the compressor output being energized. Accessory Output 2 will be energized with the fan output (BO-1). When the corresponding compressor output is turned off the accessory output will be deactivated immediately. These outputs are selectable for normally open or normally closed operation through the Medium User interface or through the Building Automation System.

SINGLE and DUAL STAGE WATER-TO-AIR			
Input Name	Input	Output Name	Output
Zone Temp 1	AI 1	Fan Enable	BO1
Relative Humidity Input	AI 2	Comp – Low Capacity	BO2
Condensate Level	AI 3	Reversing Valve	BO3
Universal Temp Input	AI 4	Comp – Full Capacity	BO4
Water Coil Low Temperature Limit	AI 5	Network Output/EH Output	BO5
Warm/Cool Adjust and Temp Occ	AI 6	Alarm	BO6
		Accessory 1 Output	BO7
Occupied	BI 1	Accessory 2 Output	BO8
Emergency Shutdown	BI 2	Network Controlled Output	B09
Stage 1 Low Pressure	BI 3		
Network Viewable Input 1	BI 4	ECM2 Fan	PWM1
Water Coil Low Temp Limit Set Point	BI 5	Network Controlled Output	PWM2
Network Viewable Input 2	BI 6		
Thermostat Y1	BI 7		
Thermostat Y2	BI 8		
Thermostat O	BI 9		
Thermostat G	BI 10		
Stage 1 High Pressure	BI11		
Compressor Proving	BI12		
XP10 Expansion Card			
Input Name	Input	Output Name	Output
Unused	AI 1	Unused	BO 1
Unused	AI 2	Unused	BO 2
Unused	AI 3	Unused	BO 3
Unused	AI 4	Unused	BO 4

Control Accessories

Zone Sensors

- TAXXJ02 Room Command Module
- TAXXA04 LCD Room Command Module
- A99 Sensor

MUI (LCD User interface) for diagnostics and commissioning.

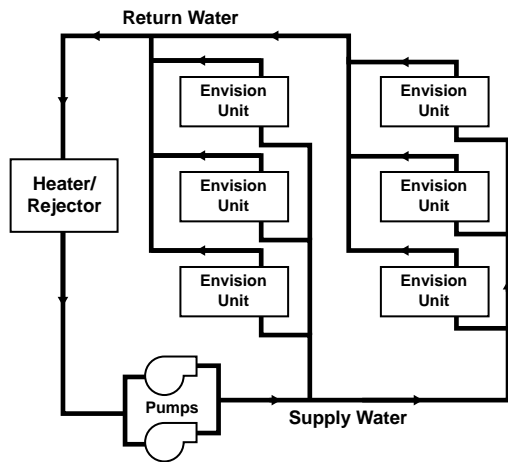
- MUIK3 - Panel Mount, Portable
- MUIK4 - Wall Mount

Application Notes

The Closed Loop Heat Pump Concept

The basic principle of a water source heat pump is the transfer of heat into water from the space during cooling, or the transfer of heat from water into the space during heating. Extremely high levels of energy efficiency are achieved as electricity is used only to move heat, not to produce it. Using a typical WaterFurnace Envision Series, one unit of electricity will move four to five units of heat.

When multiple water source heat pumps are combined on a common circulating loop, the ultimate in energy efficiency is created: The WaterFurnace units on cooling mode are adding heat to the loop which the units in heating mode can absorb, thus removing heat from the area where cooling is needed, recovering and redistributing that heat for possible utilization elsewhere in the system. In modern commercial structures, this characteristic of heat recovery from core area heat generated by lighting, office equipment, computers, solar radiation, people or other sources, is an important factor in the high efficiency and low operating costs of WaterFurnace closed source heat pump systems.



In the event that a building's net heating and cooling requirements create loop temperature extremes, Envision Series units have the extended range capacity and versatility to maintain a comfortable environment for all building areas. Excess heat can be stored for later utilization or be added or removed in one of three ways; by ground source heat exchanger loops: plate heat exchangers connected to other water sources, or conventional boiler/tower configurations. Your WaterFurnace representative has the expertise and computer software to assist in determining optimum system type for specific applications.

The Closed Loop Advantage

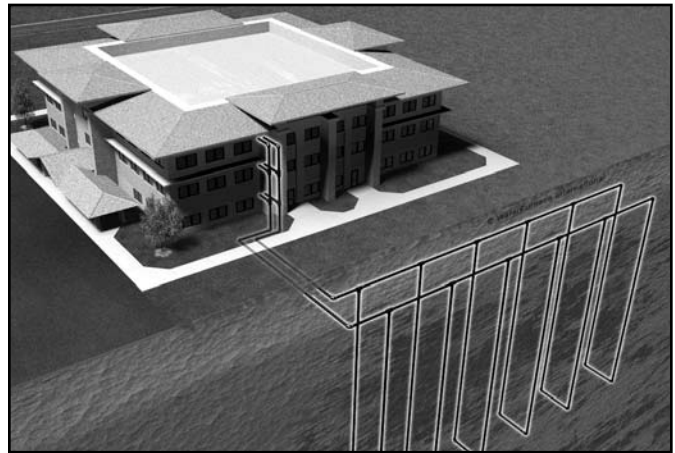
A properly applied water source heat pump system offers many advantages over other systems. First costs are low because units can be added to the loop on an "as

needed basis"- perfect for speculative buildings. Installed costs are low since units are self-contained and can be located adjacent to the occupied space, requiring minimal ductwork. Maintenance can be done on individual units without system shut-down. Conditions remain comfortable since each unit operates separately, allowing cooling in one area and heating in another. Tenant spaces can be finished and added as needed. Power billing to tenants is also convenient since each unit can be individually metered: each pays for what each uses. Nighttime and/or weekend uses of certain areas are possible without heating or cooling the entire facility. A decentralized system also means if one unit should fault, the rest of the system will continue to operate normally, as well as eliminating air cross-contamination problems and expensive high pressure duct systems requiring an inefficient electric resistance reheat mode.

The Envision Approach

There are a number of proven choices in the type of Envision Series system which would be best for any given application. Most often considered are:

Vertical - Closed Loop/Ground Source



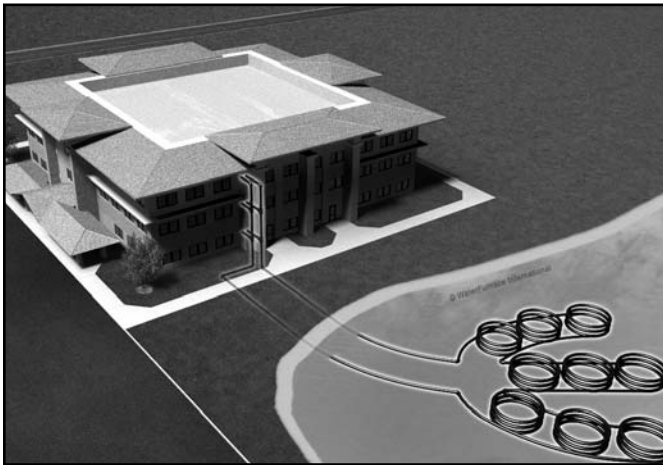
• **Closed Loop/Ground Source Systems** utilize the stable temperatures of the earth to maintain proper water source temperatures (via vertical or horizontal closed loop heat exchangers) for Envision Series extended range heat pump system. Sizes range from a single unit through many hundreds of units. When net cooling requirements cause closed loop water temperatures to rise, heat is dissipated into the cooler earth through buried high strength plastic pipe "heat exchangers." Conversely if net space heating demands cause loop heat absorption beyond that heat recovered from building core areas, the loop temperature will fall causing heat to be extracted from the earth. Due to the extended loop temperatures, AHRI/ISO 13256-1 Ground Loop Water Source Heat Pumps are required for this application.

Application Notes cont.

Because auxiliary equipment such as a boiler (fossil fuel) and cooling tower are not required to maintain the loop temperature, operating and maintenance costs are very low. Ground source systems are most applicable in residential and light commercial buildings where both heating and cooling are desired, and on larger envelope dominated structures where core heat recovery will not meet overall heating loads. Both vertical and horizontally installed closed loops can be used. The land space required for the "heat exchangers" is 100-250 sq. ft./ton on vertical (drilled) installations and 750-1500 sq. ft./ton for horizontal (trenched) installations. Closed loop heat exchangers can be located under parking areas or even under the building itself.

On large multi-unit systems, sizing the closed loop heat exchanger to meet only the net heating loads and assisting in the summer with a closed circuit cooling tower may be the most cost effective choice.

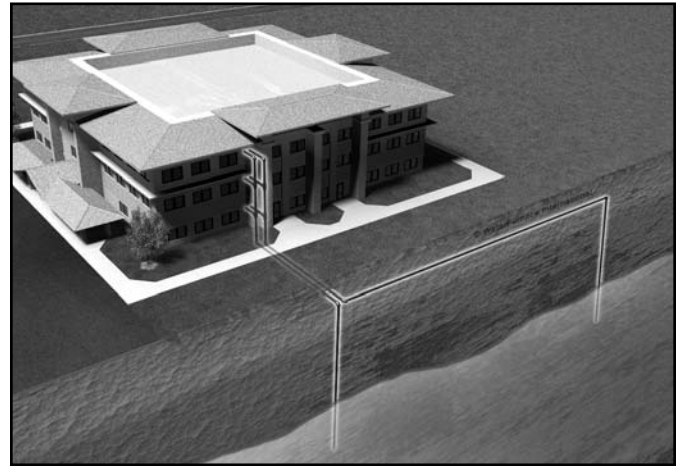
Surface Water - Closed Loop/Ground Source



• **Surface Water - Closed Loop/Ground Source Systems** also utilize the stable temperatures of Surface Water to maintain proper water source temperatures for Envision Series extended range heat pump systems. These systems have all of the advantages of horizontal and vertical closed loop systems. Due to the extended loop temperatures, AHRI/ISO 13256-1 Ground Water or Ground Loop Heat Pumps are required for this application.

In cooling dominated structures, the ground source surface water systems can be very cost effective especially where local building codes require water retention ponds for short term storage of surface run-off. Sizing requirements for the surface water is a minimum of 500 sq. ft./ton of surface area at a minimum depth of 8 feet. WaterFurnace should be contacted when designs for heating dominated structures are required.

Plate Heat Exchanger - Closed Loop/Ground Water



• **Plate Heat Exchanger - Closed Loop/Ground Water Systems** utilize lake, ocean, well water or other water sources to maintain closed loop water temperatures in multi-unit Envision systems. A plate frame heat exchanger isolates the units from any contaminating effects of the water source, and allows periodic cleaning of the heat exchanger during off peak hours.

Operation and benefits are similar to those for ground source systems. Due to the extended loop temperatures, AHRI/ISO 13256-1 Ground Loop Heat Pumps are required for this application. Closed loop plate heat exchanger systems are applicable in commercial, marine, or industrial structures where the many benefits of a water source heat pump system are desired, regardless of whether the load is heating or cooling dominated.

Application Notes cont.

Boiler/Tower - Closed Loop



• **Boiler/Tower - Closed Loop Systems** utilize a closed heat recovering loop with multiple water source heat pumps in the more conventional manner. Typically a boiler is employed to maintain closed loop temperatures above 60°F and a cooling tower to maintain loop temperatures below 90°F. These systems are applicable in medium to large buildings regardless of whether the load is heating or cooling dominated. Due to the moderate loop temperatures, AHRI/ISO 13256-1 Water Loop Heat Pumps are required for this application.

Water Quality

In ground water situations where scaling could be heavy or where biological growth such as iron bacteria will be present, a closed loop system is recommended. The heat exchanger coils in ground water systems may, over a period of time, lose heat exchange capabilities due to a buildup of mineral deposits inside. These can be cleaned, but only by a qualified service mechanic, as special solutions and pumping equipment are required. Hot water generator coils can likewise become scaled and possibly plugged. In areas

with extremely hard water, the owner should be informed that the heat exchanger may require occasional flushing.

Units with cupronickel heat exchangers are recommended for open loop applications due to the increased resistance to build-up and corrosion, along with reduced wear caused by acid cleaning. Failure to adhere to the guidelines in the water quality table could result in the loss of warranty.

Material		Copper	90/10 Cupronickel	316 Stainless Steel
pH	Acidity/Alkalinity	7 - 9	7 - 9	7 - 9
Scaling	Calcium and Magnesium Carbonate	(Total Hardness) less than 350 ppm	(Total Hardness) less than 350 ppm	(Total Hardness) less than 350 ppm
Corrosion	Hydrogen Sulfide	Less than 0.5 ppm (rotten egg smell appears at 0.5 ppm)	10 - 50 ppm	Less than 1 ppm
	Sulfates	Less than 125 ppm	Less than 125 ppm	Less than 200 ppm
	Chlorine	Less than 0.5 ppm	Less than 0.5 ppm	Less than 0.5 ppm
	Chlorides	Less than 20 ppm	Less than 125 ppm	Less than 300 ppm
	Carbon Dioxide	Less than 50 ppm	10 - 50 ppm	10 - 50 ppm
	Ammonia	Less than 2 ppm	Less than 2 ppm	Less than 20 ppm
	Ammonia Chloride	Less than 0.5 ppm	Less than 0.5 ppm	Less than 0.5 ppm
	Ammonia Nitrate	Less than 0.5 ppm	Less than 0.5 ppm	Less than 0.5 ppm
	Ammonia Hydroxide	Less than 0.5 ppm	Less than 0.5 ppm	Less than 0.5 ppm
	Ammonia Sulfate	Less than 0.5 ppm	Less than 0.5 ppm	Less than 0.5 ppm
Total Dissolved Solids (TDS)	Less than 1000 ppm	1000 - 1500 ppm	1000 - 1500 ppm	
LSI Index	+0.5 to -0.5	+0.5 to -0.5	+0.5 to -0.5	
Iron Fouling (Biological Growth)	Iron, FE ²⁺ (Ferrous) Bacterial Iron Potential	< 0.2 ppm	< 0.2 ppm	< 0.2 ppm
	Iron Oxide	Less than 1 ppm, above this level deposition will occur	Less than 1 ppm, above this level deposition will occur	Less than 1 ppm, above this level deposition will occur
Erosion	Suspended Solids	Less than 10 ppm and filtered for max. of 600 micron size	Less than 10 ppm and filtered for max. of 600 micron size	Less than 10 ppm and filtered for max. of 600 micron size
	Threshold Velocity (Fresh Water)	< 6 ft/sec	< 6 ft/sec	< 6 ft/sec

NOTES: Grains = ppm divided by 17
mg/L is equivalent to ppm

2/22/12

Installation Notes

Typical Unit Installation

Unit Location

Locate the unit in an indoor area that allows for easy removal of the filter and access panels. Location should have enough space for service personnel to perform maintenance or repair. Provide sufficient room to make water and electrical connection(s). Any access panel screws that would be difficult to remove after the unit is installed should be removed prior to setting the unit. **Care should be taken when units are located in unconditioned spaces to prevent damage from frozen water lines and excessive heat that could damage electrical components.**

Installing Console Units

Console units are available in left or right air return configurations. Units should be mounted level on the floor. It is not necessary to anchor the unit to the floor.

WARNING: Before performing service or maintenance operations on a system, turn off main power switches to the indoor unit. If applicable, turn off the accessory heater power switch. Electrical shock could cause personal injury.

Installing and servicing heating and air conditioning equipment can be hazardous due to system pressure and electrical components. Only trained and qualified service personnel should install, repair or service heating and air conditioning equipment. Untrained personnel can perform the basic maintenance functions of cleaning coils and cleaning and replacing filters.

All other operations should be performed by trained service personnel. When working on heating and air conditioning equipment, observe precautions in the literature, tags and labels attached to the unit and other safety precautions that

may apply. Follow all safety codes. Wear safety glasses and work gloves. Use a quenching cloth for brazing operations and have a fire extinguisher available.

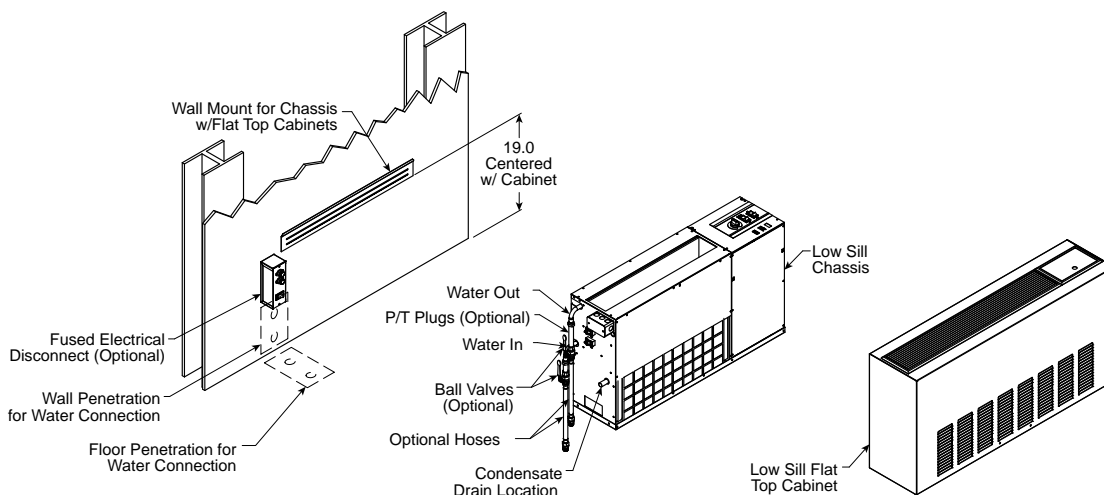
Water Piping

Piping is usually design as 'reverse return' to equalize flow paths through each unit. A short flexible pressure rated hose is used to make connection to the fixed building piping system. This hose is typically stainless steel braid and includes a swivel fitting on one end for easy removal and is flexible to help isolate the unit for quieter operation. Isolation valves for servicing, y-strainers for filtering, and memory-stop flow valve or a balancing valve can be provided for consistent water flow through the unit.

All unit source water connections are fittings that accept a male pipe thread (MPT). Insert the connectors by hand, then tighten the fitting with a wrench to provide a leakproof joint. The open and closed loop piping system should include pressure/temperature ports for serviceability. The proper water flow must be provided to each unit whenever the unit operates. To assure proper flow, use pressure/temperature ports to determine the flow rate. These ports should be located at the supply and return water connections on the unit. The proper flow rate cannot be accurately set without measuring the water pressure drop through the refrigerant-to-water heat exchanger. Check carefully for water leaks.

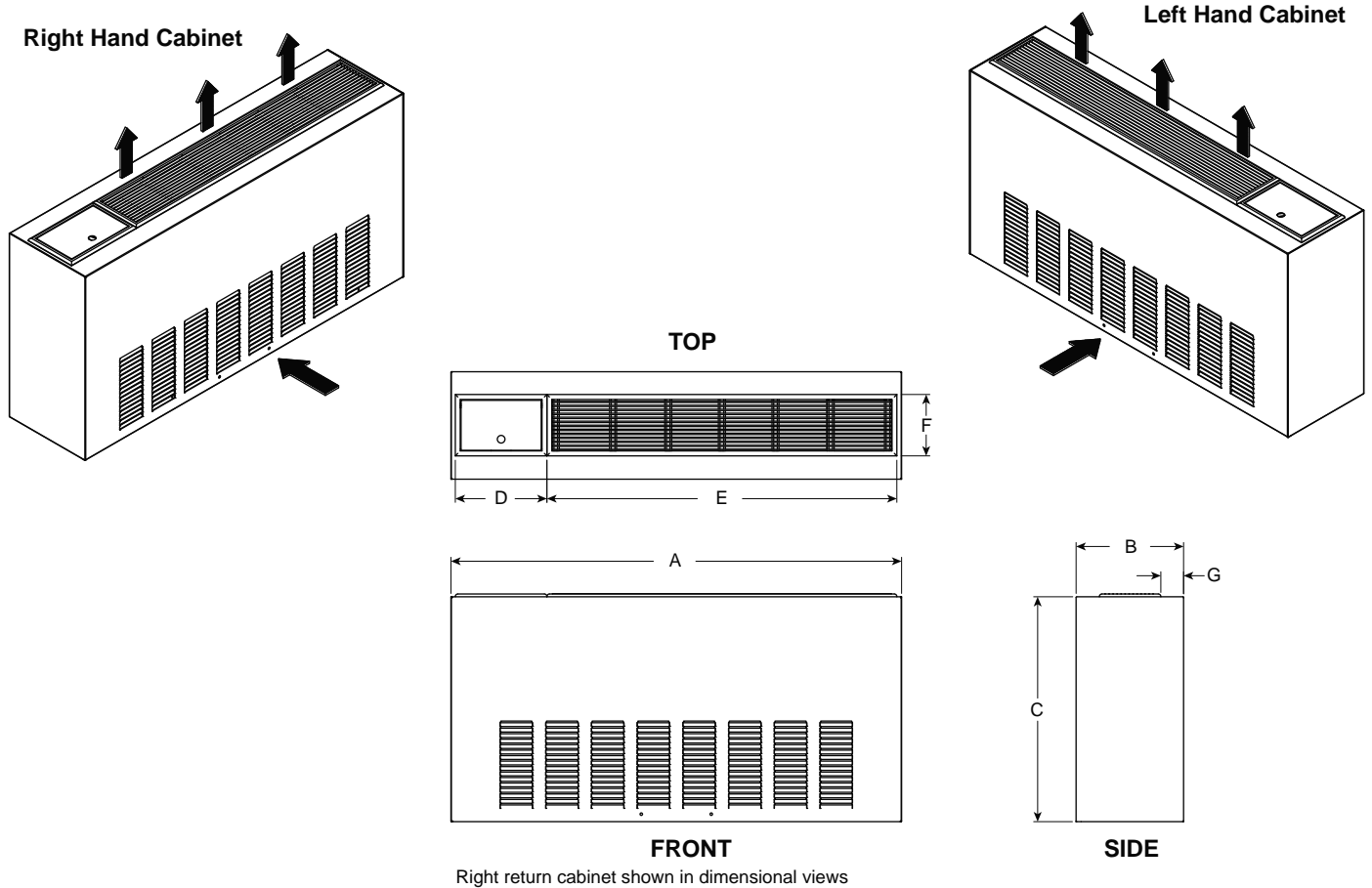
Condensate Drain

On console units, the internal condensate drain assembly consists of a drain tube which is connected to the drain pan. A condensate tube is inside all cabinets as a trapping loop; therefore, an external trap is not necessary.



Dimensional Data - Flat Top Cabinet

LCW09-18



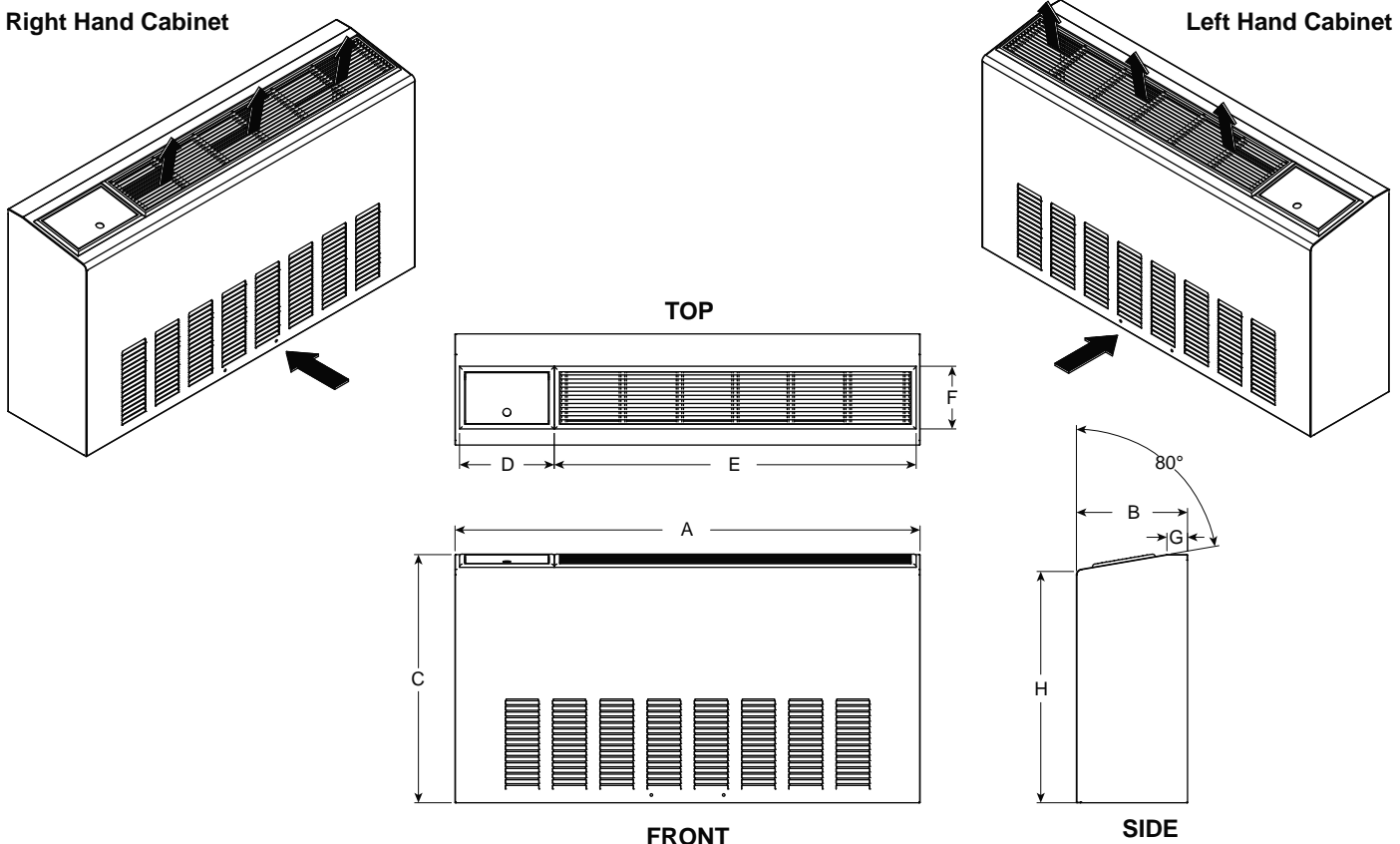
Flat Top Configuration		Overall Cabinet			Grille			
		A	B	C	D	E	F	G
		Width	Depth	Height	Grille Lid	Grille Length	Grille Width	
09-12	in.	45.1	10.8	22.5	9.2	35.0	6.1	2.3
	cm.	114.6	27.4	57.2	23.4	88.9	15.6	5.8
15-18	in.	50.0	12.8	22.5	9.2	35.0	6.1	3.3
	cm.	127.0	32.4	57.2	23.4	88.9	15.6	8.3

Dimensional Data - Slope Top Cabinet

LCS09-18

Right Hand Cabinet

Left Hand Cabinet

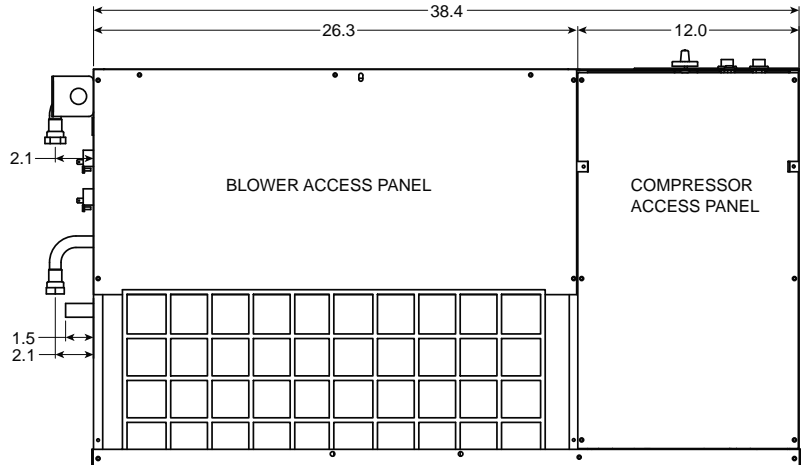
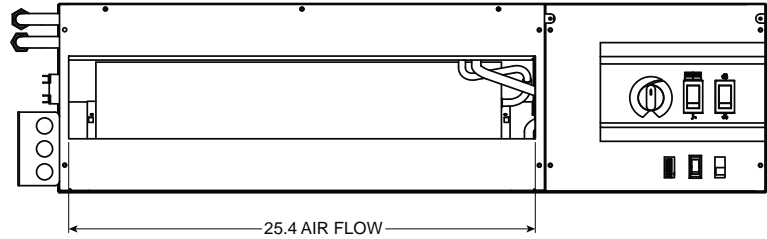
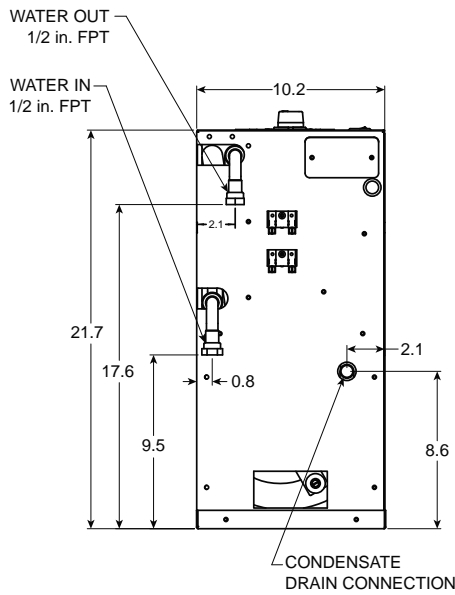


Right return cabinet shown in dimensional views

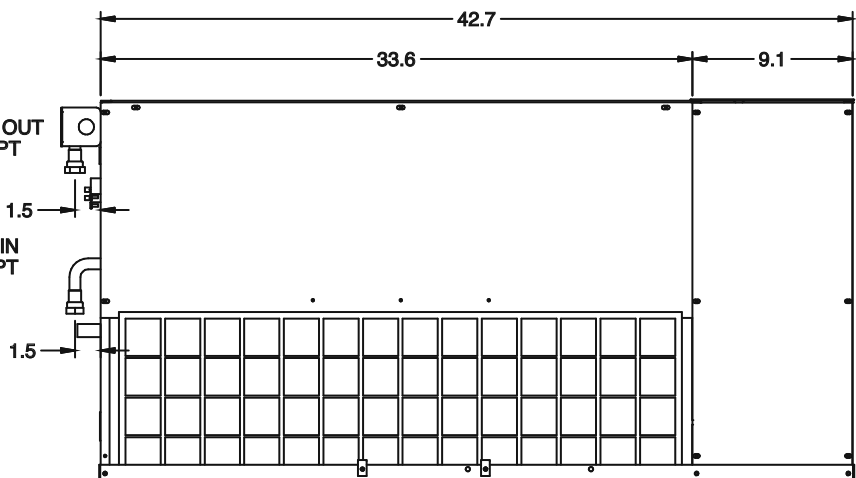
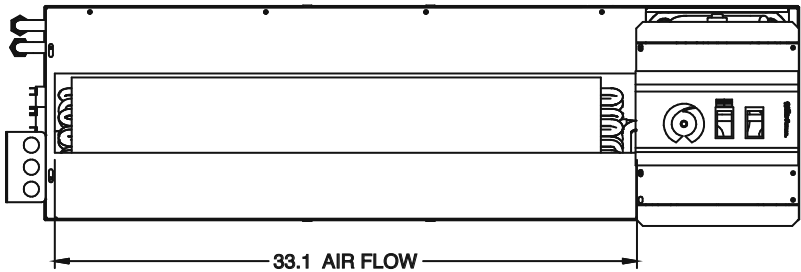
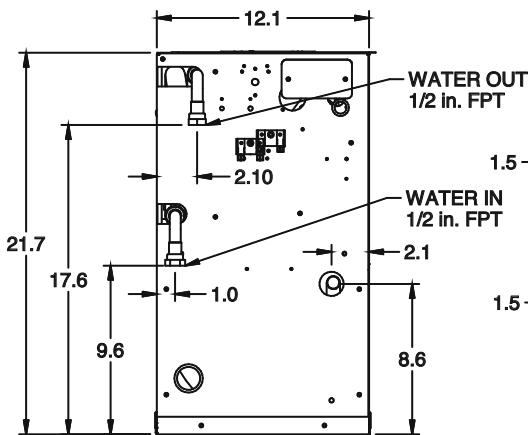
Slope Top Configuration		Overall Cabinet			Grille				
		A	B	C	D	E	F	G	H
		Width	Depth	Height	Grille Lid	Grille Length	Grille Width		
09-12	in.	45.1	10.8	24.0	9.2	35.0	6.1	2.0	22.4
	cm.	114.6	27.4	61.0	23.4	88.9	15.6	5.1	56.9
15-18	in.	50.0	12.8	24.0	9.2	35.0	6.1	2.0	22.5
	cm.	127.0	32.4	61.0	23.4	88.9	15.6	5.1	57.2

Dimensional Data - Chassis

LCC09-12

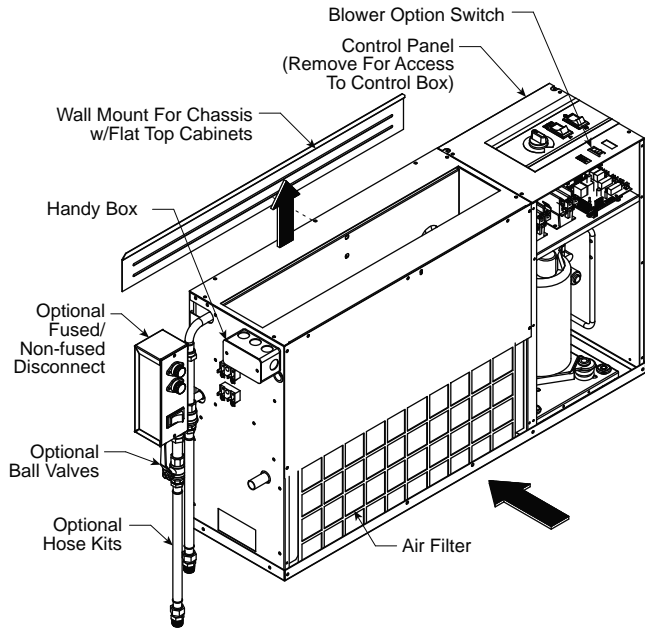


LCC15-18

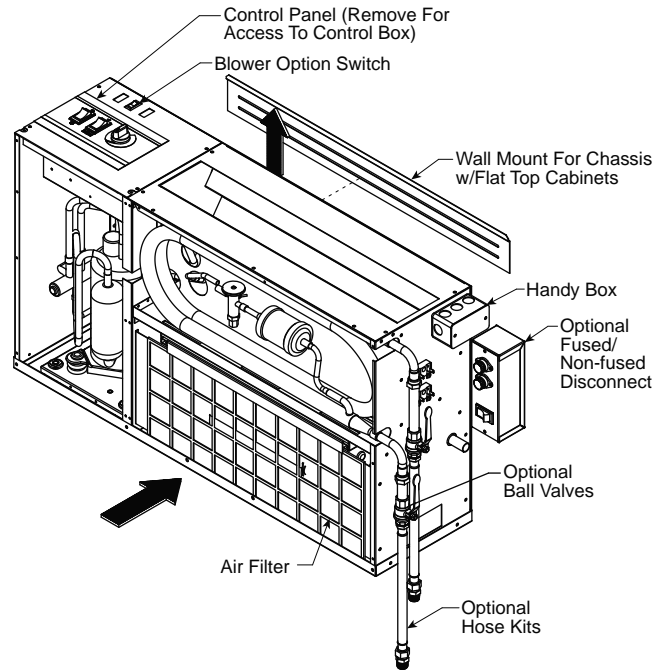


Dimensional Data - Controls Detail: Flat Top Chassis

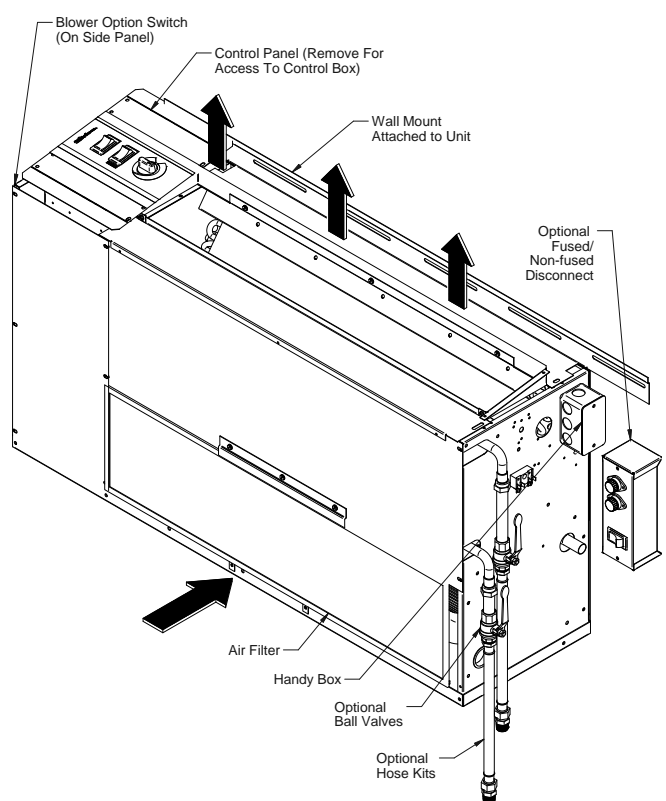
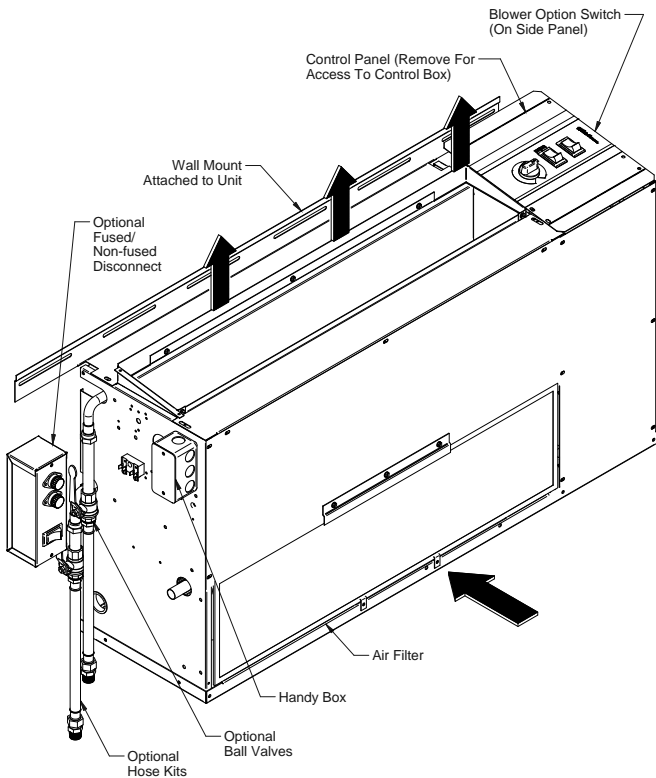
Left Return



Right Return



Dimensional Data - Controls Detail: Slope Top Chassis



Physical Data

Model	Console			
	09	12	15	18
Compressor (1 each)	Rotary			
Factory Charge R-410A, oz [kg]	27 [0.77]	27 [0.77]	36 [1.02]	34 [1.0]
Blower Motor & Blower				
Blower Motor Type/Speeds	3-Spd ECM	N/A		3 Speeds
Blower Motor - hp [W]	3-Spd ECM	N/A		1/4 [186] 1/4 [186]
Blower Wheel Size (Dia x W), in. [mm]	3-Spd ECM	N/A		6.0 x 6.5 [152 x 165] 6.0 x 6.5 [152 x 165]
Blower Motor Type/Speeds	PSC	2 Speeds		N/A
Blower Motor - hp [W]	PSC	1/16 [44.7]	1/16 [44.7]	N/A
Blower Wheel Size (Dia x W), in. [mm]	PSC	5.75 x 5.50 [146 x 140]	5.75 x 5.50 [146 x 140]	N/A
Coax and Water Piping				
Water Connection Size - FPT - in [mm]	1/2 [12.7]	1/2 [12.7]	1/2 [12.7]	1/2 [12.7]
Coax & Piping Water Volume - gal [l]	0.15 [0.6]	0.18 [0.7]	0.15 [0.6]	0.18 [0.7]
Air Coil				
Air Coil Dimensions (H x W), in. [mm]	8 x 22 [203 x 559]	8 x 22 [203 x 559]	8 x 30 [203 x 762]	8 x 30 [203 x 762]
Air Coil Total Face Area, ft ² [m ²]	1.2 [0.114]	1.2 [0.114]	1.7 [0.16]	1.7 [0.16]
Air Coil Tube Size, in [mm]	3/8 [9.5]	3/8 [9.5]	3/8 [9.5]	3/8 [9.5]
Air Coil Number of Rows	3	3	4	4
Filter Standard - Throwaway, in [mm]	23 x 9.6 [584 x 244]	23 x 9.6 [584 x 244]	32 x 9.6 [813 x 244]	32 x 9.6 [813 x 244]
Weight - Packaged, lb [kg]	200 [91]	205 [93]	215 [98]	220 [100]

12/13/13

Blower Performance Data

Model	CFM	
	Low Speed	High Speed
09	260	300
12	300	340
15	375	450
18	450	600

Air flow values are with dry coil and standard filter.
For wet coil performance, first calculate the face velocity of the air coil
(face velocity (fpm) = airflow (cfm) / face area (sq ft))

Electrical Data

Model	Rated Voltage	Voltage Min/Max	Compressor			Blower Motor FLA	Total Unit FLA	Min Circ Amp	Max Fuse/HACR
			MCC	RLA	LRA				
09	115/60/1	104/127	12.5	8.0	50.0	1.5	9.5	11.5	15
	208-230/60/1	187/253	6.4	4.1	21.0	0.6	4.7	5.7	10/15
	265/60/1	238/292	6.7	4.3	22.0	0.6	4.9	6.0	10/15
12	115/60/1	104/127	14.8	9.5	50.0	1.5	11.0	13.4	20
	208-230/60/1	187/253	7.7	4.9	25.0	0.6	5.5	6.7	10/15
	265/60/1	238/292	7.0	4.5	22.0	0.6	5.1	6.2	10/15
15	208-230/60/1	187/253	9.2	5.9	29.0	2.6	8.5	10.0	15
	265/60/1	238/292	7.8	5.0	28.0	2.5	7.5	8.7	10/15
18	208-230/60/1	187/253	10.4	6.7	33.5	2.6	9.3	11.0	15
	265/60/1	238/292	8.7	5.6	28.0	2.5	8.1	9.5	15

HACR circuit breaker in USA only

6/10/13

Pressure Drop

Model	GPM	Pressure Drop (psi)				
		30°F	50°F	70°F	90°F	110°F
09	1.2	1.0	0.9	0.8	0.7	0.6
	1.8	2.3	2.2	2.0	1.9	1.8
	2.5	3.8	3.7	3.5	3.3	3.1
12	1.5	0.9	0.8	0.7	0.6	0.5
	2.3	1.7	1.5	1.4	1.3	1.1
	3.5	3.0	2.7	2.5	2.4	2.2
15	2.0	1.7	1.6	1.5	1.4	1.3
	3.0	3.3	3.2	3.0	2.9	2.8
	4.5	5.7	5.5	5.3	5.1	4.9
18	3.0	1.7	1.6	1.5	1.4	1.3
	4.0	4.1	4.0	3.9	3.7	3.6
	5.5	7.9	7.6	7.4	7.2	6.9

6/10/13

Antifreeze Corrections

Antifreeze Type	Antifreeze % by wt	Cooling Capacity	Heating Capacity	Pressure Drop
EWT - degF [DegC]		90 [32.2]	30 [-1.1]	30 [-1.1]
Water	0	1.000	1.000	1.000
Ethylene Glycol	10	0.991	0.973	1.075
	20	0.979	0.943	1.163
	30	0.965	0.917	1.225
	40	0.955	0.890	1.324
	50	0.943	0.865	1.419
Propylene Glycol	10	0.981	0.958	1.130
	20	0.969	0.913	1.270
	30	0.950	0.854	1.433
	40	0.937	0.813	1.614
	50	0.922	0.770	1.816
Ethanol	10	0.991	0.927	1.242
	20	0.972	0.887	1.343
	30	0.947	0.856	1.383
	40	0.930	0.815	1.523
	50	0.911	0.779	1.639
Methanol	10	0.986	0.957	1.127
	20	0.970	0.924	1.197
	30	0.951	0.895	1.235
	40	0.936	0.863	1.323
	50	0.920	0.833	1.399

Warning: Gray area represents antifreeze concentrations greater than 35% by weight and should be avoided due to the extreme performance penalty they represent.

Correction Factor Tables

Cooling Capacity Corrections

Entering Air WB °F	Total Clg Cap	Sensible Cooling Capacity Multipliers - Entering DB °F										Power Input	Heat of Rejection
		60	65	70	75	80	80.6	85	90	95	100		
55	0.898	0.723	0.866	1.048	1.185	*	*	*	*	*	*	0.985	0.913
60	0.912		0.632	0.880	1.078	1.244	1.260	*	*	*	*	0.994	0.927
65	0.967			0.694	0.881	1.079	1.085	1.270	*	*	*	0.997	0.972
66.2	0.983			0.655	0.842	1.040	1.060	1.232	*	*	*	0.999	0.986
67	1.000			0.616	0.806	1.000	1.023	1.193	1.330	*	*	1.000	1.000
70	1.053				0.693	0.879	0.900	1.075	1.250	1.404	*	1.003	1.044
75	1.168					0.687	0.715	0.875	1.040	1.261	1.476	1.007	1.141

NOTE: * Sensible capacity equals total capacity at conditions shown.

11/10/09

Heating Corrections

Ent Air DB °F	Htg Cap	Power	Heat of Ext
45	1.062	0.739	1.158
50	1.050	0.790	1.130
55	1.037	0.842	1.096
60	1.025	0.893	1.064
65	1.012	0.945	1.030
68	1.005	0.976	1.012
70	1.000	1.000	1.000
75	0.987	1.048	0.970
80	0.975	1.099	0.930

11/10/09

Operating Limits

Operating Limits	Cooling		Heating	
	(°F)	(°C)	(°F)	(°C)
Air Limits				
Min. Ambient Air	45	7.2	45	7.2
Rated Ambient Air	80	26.7	70	21.1
Max. Ambient Air	100	37.8	85	29.4
Min. Entering Air	50	10.0	40	4.4
Rated Entering Air db/wb	80.6/66.2	27/19	68	20.0
Max. Entering Air db/wb	110/83	43/28.3	80	26.7
Water Limits				
Min. Entering Water	30	-1.1	20	-6.7
Normal Entering Water	50-110	10-43.3	30-70	-1.1
Max. Entering Water	120	48.9	90	32.2

NOTE: Minimum/maximum limits are only for start-up conditions, and are meant for bringing the space up to occupancy temperature. Units are not designed to operate at the minimum/maximum conditions on a regular basis. The operating limits are dependent upon three primary factors: 1) water temperature, 2) return air temperature, and 3) ambient temperature. When any of the factors are at the minimum or maximum levels, the other two factors must be at the normal level for proper and reliable unit operation.

Reference Calculations

Heating Calculations:	Cooling Calculations:
$LWT = EWT - \frac{HE}{gpm \times 500}$	$LWT = EWT + \frac{HR}{gpm \times 500}$
$LAT = EAT + \frac{HC}{cfm \times 1.08}$	$LAT(DB) = EAT(DB) - \frac{SC}{cfm \times 1.08}$
$TH = HC + HWC$	$LC = TC - SC$
	$S/T = \frac{SC}{TC}$

Legend and Notes

ABBREVIATIONS AND DEFINITIONS:

cfm = airflow, cubic feet/minute	HE = total heat of extraction, MBtu/h
EWT = entering water temperature, Fahrenheit	HWC = hot water generator capacity, MBtu/h
gpm = water flow in gallons/minute	EER = Energy Efficient Ratio = Btu output/Watt input
WPD = water pressure drop, psi and feet of water	COP = Coefficient of Performance = Btu output/Btu input
EAT = entering air temperature, Fahrenheit (dry bulb/wet bulb)	LWT = leaving water temperature, °F
HC = air heating capacity, MBtu/h	LAT = leaving air temperature, °F
TC = total cooling capacity, MBtu/h	TH = total heating capacity, MBtu/h
SC = sensible cooling capacity, MBtu/h	LC = latent cooling capacity, MBtu/h
KW = total power unit input, kilowatts	S/T = sensible to total cooling ratio
HR = total heat of rejection, MBtu/h	

Notes (Refer to Performance Data tables)

- Performance ratings are based on 80°F DB / 67°F WB EAT for cooling and 70°F DB EAT for heating.
- Three flow rates are shown for each unit. The lowest flow rate shown is used for geothermal open loop/well water systems with a minimum of 50°F EWT. The middle flow rate shown is the minimum geothermal closed loop flow rate. The highest flow rate shown is optimum for geothermal closed loop systems and the suggested flow rate for boiler/tower applications.
- The hot water generator numbers are based on a flow rate of 0.4 gpm/ton of rated capacity with an EWT of 90°F.
- Entering water temperatures below 40°F assumes 15% antifreeze solution.
- For non-standard EAT conditions, apply the appropriate correction factors on (Refer to Correction Factor Tables).
- Interpolation between EWT, gpm, and cfm data is permissible.

LC*09 - Performance Data

Single Speed PSC (300 cfm)

EWT °F	Flow GPM	WPD		HEATING - EAT 70°F					COOLING - EAT 80/67°F					
		PSI	FT	HC Mbtu/h	Power kW	HE Mbtu/h	LAT °F	COP	TC Mbtu/h	SC MBtu/h	S/T Ratio	Power kW	HR MBtu/h	EER
20	1.2	1.1	2.5	Operation not recommended					Operation not recommended					
	1.8	2.4	5.5	Operation not recommended					Operation not recommended					
	2.5	3.8	8.8	6.3	0.67	4.0	87.3	2.74	Operation not recommended					
30	1.2	1.0	2.3	Operation not recommended					Operation not recommended					
	1.8	2.3	5.3	7.5	0.72	5.0	91.0	3.02	12.2	8.1	0.67	0.50	13.9	24.3
	2.5	3.8	8.8	7.4	0.72	5.0	90.9	3.02	12.4	8.3	0.67	0.47	14.0	26.2
40	1.2	1.0	2.3	Operation not recommended					Operation not recommended					
	1.8	2.3	5.3	8.3	0.75	5.7	93.6	3.26	11.6	7.9	0.68	0.56	13.5	20.8
	2.5	3.8	8.8	8.5	0.75	5.9	94.2	3.32	11.9	8.1	0.68	0.52	13.7	22.7
50	1.2	0.9	2.1	8.8	0.76	6.2	95.3	3.41	10.7	7.5	0.70	0.65	12.9	16.5
	1.8	2.2	5.1	9.2	0.77	6.6	96.3	3.50	11.0	7.7	0.70	0.61	13.1	17.9
	2.5	3.7	8.5	9.6	0.78	6.9	97.6	3.60	11.4	7.9	0.69	0.58	13.4	19.8
60	1.2	0.9	2.1	9.9	0.79	7.2	98.4	3.68	10.1	7.2	0.72	0.71	12.5	14.4
	1.8	2.1	4.9	10.3	0.79	7.6	99.7	3.79	10.4	7.4	0.71	0.67	12.7	15.5
	2.5	3.6	8.3	10.7	0.81	8.0	101.1	3.91	10.8	7.6	0.71	0.64	13.0	17.0
70	1.2	0.8	1.8	10.9	0.81	8.1	101.6	3.94	9.5	7.0	0.73	0.76	12.1	12.5
	1.8	2.0	4.6	11.3	0.82	8.5	103.0	4.06	9.9	7.2	0.73	0.73	12.4	13.5
	2.5	3.5	8.1	11.9	0.83	9.0	104.6	4.19	10.3	7.4	0.72	0.70	12.6	14.8
80	1.2	0.8	1.8	12.2	0.82	9.4	105.6	4.33	9.1	6.8	0.75	0.82	11.9	11.0
	1.8	2.0	4.6	12.5	0.83	9.7	106.6	4.39	9.3	6.9	0.74	0.79	12.0	11.9
	2.5	3.4	7.9	12.9	0.85	10.0	107.7	4.47	9.6	7.1	0.74	0.76	12.2	12.6
90	1.2	0.7	1.6	13.5	0.84	10.6	109.5	4.70	8.7	6.7	0.77	0.90	11.8	9.7
	1.8	1.9	4.4	13.7	0.85	10.8	110.2	4.71	8.8	6.7	0.76	0.86	11.7	10.3
	2.5	3.3	7.6	13.9	0.86	10.9	110.8	4.73	9.0	6.8	0.76	0.83	11.8	10.9
100	1.2	0.7	1.6	Operation not recommended					Operation not recommended					
	1.8	1.8	4.2						Operation not recommended					
	2.5	3.2	7.4						8.2	6.5	0.79	0.93	11.4	8.8
110	1.2	0.6	1.4	Operation not recommended					Operation not recommended					
	1.8	1.8	4.2						Operation not recommended					
	2.5	3.1	7.2						8.3	6.6	0.79	0.90	11.4	9.3
120	1.2	0.6	1.4	Operation not recommended					Operation not recommended					
	1.8	1.7	3.9						Operation not recommended					
	2.5	3.0	6.9						7.5	6.2	0.83	1.00	10.9	7.5
120	1.2	0.6	1.4	Operation not recommended					Operation not recommended					
	1.8	1.7	3.9						Operation not recommended					
	2.5	3.0	6.9						7.7	6.3	0.82	0.97	11.0	7.9
120	1.2	0.6	1.4	Operation not recommended					Operation not recommended					
	1.8	1.7	3.9						Operation not recommended					
	2.5	3.0	6.9						6.8	5.8	0.86	1.08	10.4	6.2
120	1.2	0.6	1.4	Operation not recommended					Operation not recommended					
	1.8	1.7	3.9						Operation not recommended					
	2.5	3.0	6.9						6.9	5.9	0.86	1.05	10.5	6.6

6/20/11

LC*12 - Performance Data

Single Speed PSC (340 cfm)

EWT °F	Flow GPM	WPD		HEATING - EAT 70°F					COOLING - EAT 80/67°F																						
		PSI	FT	HC Mbtu/h	Power kW	HE Mbtu/h	LAT °F	COP	TC Mbtu/h	SC MBtu/h	S/T Ratio	Power kW	HR MBtu/h	EER																	
20	1.5	1.0	2.3	Operation not recommended					Operation not recommended																						
	2.3	1.7	3.9	Operation not recommended					Operation not recommended																						
	3.5	3.2	7.4	8.1	0.85	5.2	90.1	2.80	Operation not recommended																						
30	1.5	0.9	2.1	Operation not recommended					Operation not recommended																						
	2.3	1.7	3.9	9.3	0.89	6.3	93.3	3.07	14.2	8.8	0.62	0.62	16.3	22.8																	
	3.5	3.0	6.9	9.3	0.91	6.2	93.3	2.99	14.3	9.0	0.63	0.58	16.3	24.6																	
40	1.5	0.9	2.1	Operation not recommended					Operation not recommended																						
	2.3	1.6	3.7	10.3	0.92	7.1	96.0	3.28	13.5	8.6	0.63	0.68	15.8	19.7																	
	3.5	2.9	6.7	10.6	0.94	7.4	96.8	3.30	13.9	8.8	0.63	0.64	16.1	21.7																	
50	1.5	0.8	1.8	11.0	0.94	7.8	97.9	3.43	12.5	8.1	0.65	0.78	15.2	15.9																	
	2.3	1.5	3.5	11.3	0.95	8.1	98.9	3.49	12.9	8.3	0.65	0.75	15.4	17.2																	
	3.5	2.7	6.2	11.9	0.97	8.6	100.3	3.59	13.4	8.6	0.64	0.70	15.8	19.2																	
60	1.5	0.8	1.8	12.2	0.98	8.9	101.4	3.68	11.9	7.9	0.66	0.85	14.8	13.9																	
	2.3	1.4	3.2	12.6	0.99	9.2	102.3	3.74	12.2	8.0	0.66	0.82	15.0	14.9																	
	3.5	2.6	6.0	13.2	1.01	9.7	103.8	3.84	12.7	8.3	0.65	0.77	15.4	16.5																	
70	1.5	0.7	1.6	13.5	1.01	10.1	104.8	3.92	11.3	7.6	0.67	0.92	14.4	12.2																	
	2.3	1.4	3.2	13.9	1.02	10.4	105.8	3.98	11.6	7.8	0.67	0.89	14.6	13.0																	
	3.5	2.5	5.8	14.4	1.04	10.9	107.3	4.07	12.1	8.0	0.67	0.85	14.9	14.2																	
80	1.5	0.7	1.6	14.9	1.07	11.2	108.5	4.09	10.7	7.4	0.69	1.00	14.1	10.7																	
	2.3	1.3	3.0	15.2	1.08	11.5	109.3	4.12	11.0	7.6	0.69	0.95	14.2	11.5																	
	3.5	2.5	5.8	15.6	1.10	11.8	110.4	4.17	11.3	7.7	0.68	0.92	14.5	12.2																	
90	1.5	0.6	1.4	16.2	1.12	12.4	112.2	4.24	10.2	7.3	0.72	1.08	13.9	9.4																	
	2.3	1.3	3.0	16.5	1.14	12.6	112.8	4.25	10.3	7.4	0.72	1.03	13.9	10.0																	
	3.5	2.4	5.5	16.7	1.15	12.8	113.5	4.26	10.6	7.5	0.71	1.00	14.0	10.6																	
100	1.5	0.6	1.4	Operation not recommended					Operation not recommended																						
	2.3	1.2	2.8						9.6						7.1	0.74	1.12	13.5	8.6												
	3.5	2.3	5.3						9.8						7.1	0.73	1.09	13.5	9.0												
110	1.5	0.5	1.2						Operation not recommended						Operation not recommended																
	2.3	1.1	2.5												8.8						6.7	0.76	1.21	12.9	7.3						
	3.5	2.2	5.1												9.0						6.8	0.76	1.18	13.0	7.7						
120	1.5	0.5	1.2												Operation not recommended						Operation not recommended										
	2.3	1.1	2.5																		7.9						6.4	0.80	1.31	12.4	6.0
	3.5	2.1	4.9																		8.1						6.5	0.80	1.27	12.4	6.4

6/20/11

LC*15 - Performance Data

3-Speed ECM (450 cfm)

EWT °F	Flow GPM	WPD		HEATING - EAT 70°F					COOLING - EAT 80/67°F					
		PSI	FT	HC Mbtu/h	Power kW	HE Mbtu/h	LAT °F	COP	TC Mbtu/h	SC MBtu/h	S/T Ratio	Power kW	HR MBtu/h	EER
20	2.0	1.5	3.5	Operation not recommended					Operation not recommended					
	3.0	5.1	11.8											
	4.5	6.1	14.2	9.7	1.05	6.2	88.0	2.72						
30	2.0	1.5	3.5	Operation not recommended					Operation not recommended					
	3.0	5.0	11.6	12.5	1.10	8.8	93.8	3.33	17.0	11.9	0.70	0.71	19.4	23.7
	4.5	6.0	13.9	11.1	1.08	7.4	90.8	3.02	17.2	12.2	0.71	0.67	19.5	25.6
40	2.0	1.4	3.2	Operation not recommended					Operation not recommended					
	3.0	4.9	11.3	13.5	1.11	9.7	95.8	3.55	16.9	11.8	0.70	0.78	19.6	21.7
	4.5	5.9	13.6	13.1	1.11	9.4	95.0	3.48	17.2	12.0	0.70	0.73	19.7	23.7
50	2.0	1.4	3.2	14.1	1.12	10.3	97.0	3.70	16.7	11.7	0.70	0.88	19.7	18.9
	3.0	4.8	11.1	14.5	1.12	10.7	97.9	3.79	16.9	11.7	0.69	0.84	19.8	20.1
	4.5	5.8	13.4	15.2	1.13	11.3	99.2	3.92	17.3	11.8	0.69	0.79	19.9	22.0
60	2.0	1.3	3.0	15.2	1.13	11.4	99.3	3.95	15.7	11.5	0.74	0.97	19.0	16.2
	3.0	4.7	10.9	15.7	1.13	11.8	100.3	4.05	15.8	11.6	0.73	0.93	19.0	17.0
	4.5	5.7	13.2	16.4	1.14	12.5	101.7	4.20	16.1	11.7	0.73	0.88	19.1	18.4
70	2.0	1.3	3.0	16.3	1.14	12.4	101.6	4.19	14.6	11.4	0.78	1.05	18.2	13.8
	3.0	4.6	10.6	16.8	1.14	12.9	102.7	4.31	14.7	11.5	0.78	1.02	18.2	14.5
	4.5	5.5	12.7	17.6	1.15	13.7	104.3	4.49	14.9	11.6	0.77	0.97	18.2	15.5
80	2.0	1.2	2.8	18.3	1.14	14.4	105.7	4.71	15.1	10.9	0.72	1.15	19.1	13.2
	3.0	4.5	10.4	18.7	1.15	14.8	106.6	4.77	15.3	11.0	0.72	1.10	19.1	14.0
	4.5	5.4	12.5	19.3	1.16	15.3	107.7	4.87	15.6	11.1	0.71	1.06	19.2	14.7
90	2.0	1.2	2.8	20.3	1.14	16.4	109.8	5.22	15.7	10.4	0.66	1.25	19.9	12.5
	3.0	4.4	10.2	20.6	1.16	16.7	110.5	5.23	15.9	10.5	0.66	1.19	20.0	13.3
	4.5	5.3	12.2	20.9	1.17	17.0	111.1	5.25	16.2	10.6	0.65	1.16	20.2	14.1
100	2.0	1.2	2.8	Operation not recommended					Operation not recommended					
	3.0	4.3	9.9						15.0	10.1	0.68	1.32	19.4	11.4
	4.5	5.2	12.0						15.2	10.2	0.67	1.27	19.5	11.9
110	2.0	1.1	2.5	Operation not recommended					Operation not recommended					
	3.0	4.2	9.7						13.8	9.7	0.70	1.43	18.7	9.7
	4.5	5.1	11.8						14.1	9.8	0.69	1.39	18.9	10.1
120	2.0	1.1	2.5	Operation not recommended					Operation not recommended					
	3.0	4.1	9.5						12.7	9.3	0.73	1.56	18.0	8.1
	4.5	5.0	11.6						13.0	9.4	0.73	1.52	18.2	8.5

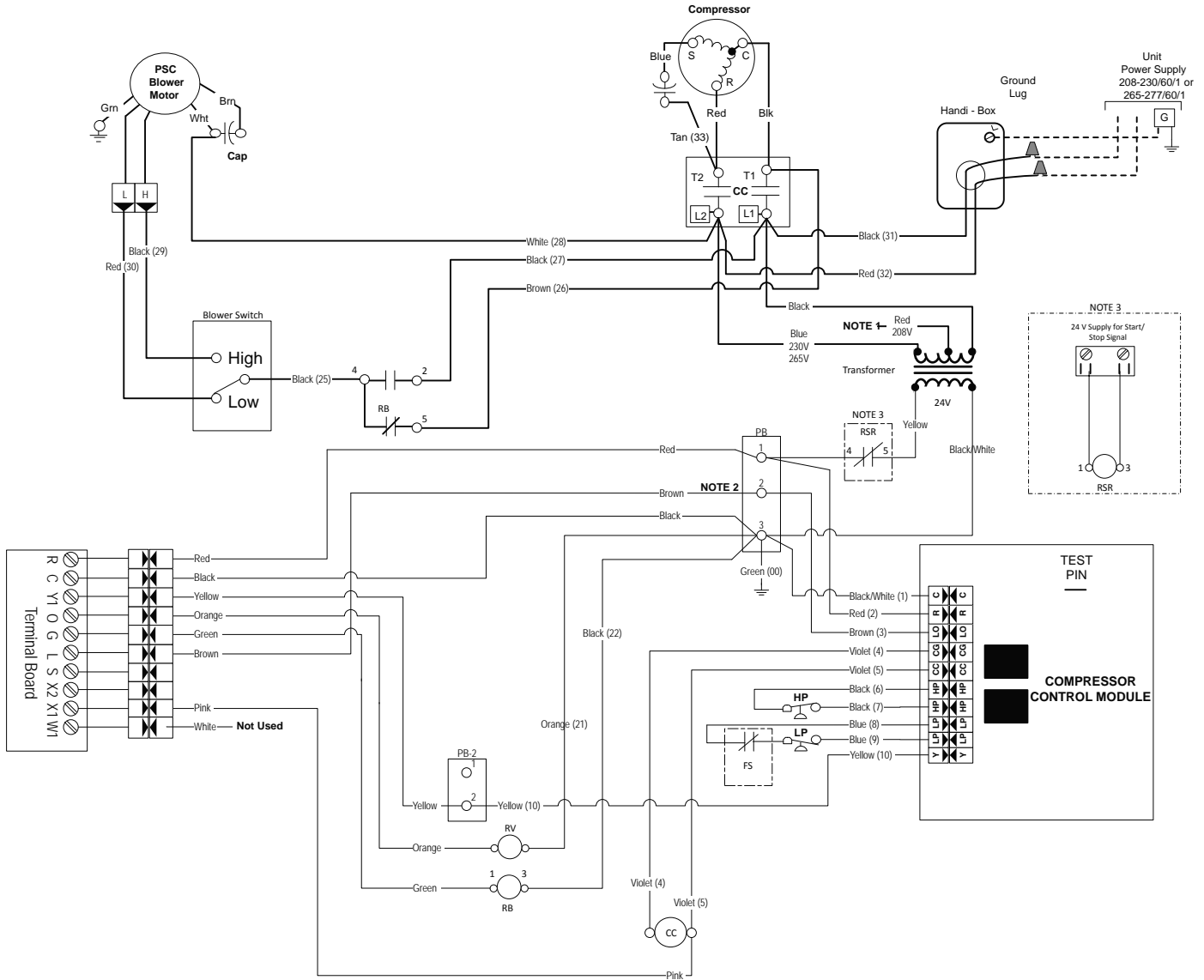
LC*18 - Performance Data

3-Speed ECM (600 cfm)

EWT °F	Flow GPM	WPD		HEATING - EAT 70°F					COOLING - EAT 80/67°F					
		PSI	FT	HC Mbtu/h	Power kW	HE Mbtu/h	LAT °F	COP	TC Mbtu/h	SC MBtu/h	S/T Ratio	Power kW	HR MBtu/h	EER
20	3.0	3.3	7.6	Operation not recommended					Operation not recommended					
	4.0	5.4	12.5	Operation not recommended					Operation not recommended					
	5.5	9.2	21.3	11.5	1.32	7.0	89.2	2.55	Operation not recommended					
30	3.0	3.2	7.4	Operation not recommended					Operation not recommended					
	4.0	5.3	12.2	14.1	1.34	9.5	94.2	3.09	20.2	12.6	0.62	0.93	23.4	21.7
	5.5	9.0	20.8	13.2	1.35	8.5	92.4	2.85	20.5	12.8	0.63	0.88	23.5	23.4
40	3.0	3.1	7.2	Operation not recommended					Operation not recommended					
	4.0	5.1	11.8	15.6	1.39	10.8	96.9	3.28	20.3	13.2	0.65	0.98	23.6	20.6
	5.5	9.1	21.0	15.4	1.41	10.6	96.5	3.20	20.5	13.4	0.65	0.94	23.7	21.9
50	3.0	3.0	6.9	16.9	1.44	12.0	99.3	3.43	20.2	13.8	0.68	1.06	23.8	19.0
	4.0	5.0	11.6	17.2	1.45	12.2	99.8	3.47	20.3	13.9	0.68	1.04	23.9	19.6
	5.5	8.9	20.6	17.6	1.46	12.6	100.5	3.53	20.5	14.0	0.68	1.00	23.9	20.6
60	3.0	2.9	6.7	18.7	1.50	13.6	102.7	3.66	18.9	13.5	0.71	1.18	22.9	16.1
	4.0	4.8	11.1	19.0	1.50	13.9	103.2	3.70	19.0	13.5	0.71	1.15	22.9	16.5
	5.5	8.6	19.9	19.5	1.51	14.3	104.0	3.77	19.1	13.6	0.71	1.11	22.9	17.3
70	3.0	2.8	6.5	20.6	1.56	15.2	106.1	3.87	17.6	13.1	0.75	1.29	22.0	13.6
	4.0	4.7	10.9	20.9	1.56	15.5	106.7	3.92	17.6	13.1	0.75	1.26	21.9	14.0
	5.5	8.3	19.2	21.4	1.57	16.0	107.5	3.99	17.7	13.2	0.74	1.21	21.9	14.6
80	3.0	2.7	6.2	21.8	1.56	16.4	108.3	4.08	16.5	12.7	0.77	1.44	21.4	11.5
	4.0	4.5	10.4	22.1	1.58	16.7	109.0	4.11	16.6	12.8	0.77	1.37	21.3	12.1
	5.5	8.0	18.5	22.5	1.59	17.1	109.7	4.15	16.8	12.8	0.76	1.33	21.4	12.7
90	3.0	2.6	6.0	23.0	1.57	17.6	110.6	4.29	15.4	12.3	0.80	1.56	20.7	9.8
	4.0	4.3	9.9	23.4	1.59	17.9	111.3	4.30	15.6	12.4	0.79	1.49	20.7	10.5
	5.5	7.7	17.8	23.7	1.61	18.2	111.9	4.31	15.9	12.5	0.78	1.44	20.9	11.1
100	3.0	2.5	5.8	Operation not recommended					Operation not recommended					
	4.0	4.2	9.7	Operation not recommended					14.6	11.8	0.81	1.63	20.1	9.0
	5.5	7.5	17.3	Operation not recommended					14.8	11.9	0.81	1.58	20.2	9.4
110	3.0	2.4	5.5	Operation not recommended					Operation not recommended					
	4.0	4.0	9.2	Operation not recommended					13.4	11.2	0.84	1.76	19.4	7.6
	5.5	7.2	16.6	Operation not recommended					13.7	11.4	0.83	1.71	19.5	8.0
120	3.0	2.3	5.3	Operation not recommended					Operation not recommended					
	4.0	3.9	9.0	Operation not recommended					12.0	10.8	0.90	1.92	18.5	6.2
	5.5	6.9	15.9	Operation not recommended					12.2	10.9	0.89	1.86	18.6	6.6

Wiring Schematics

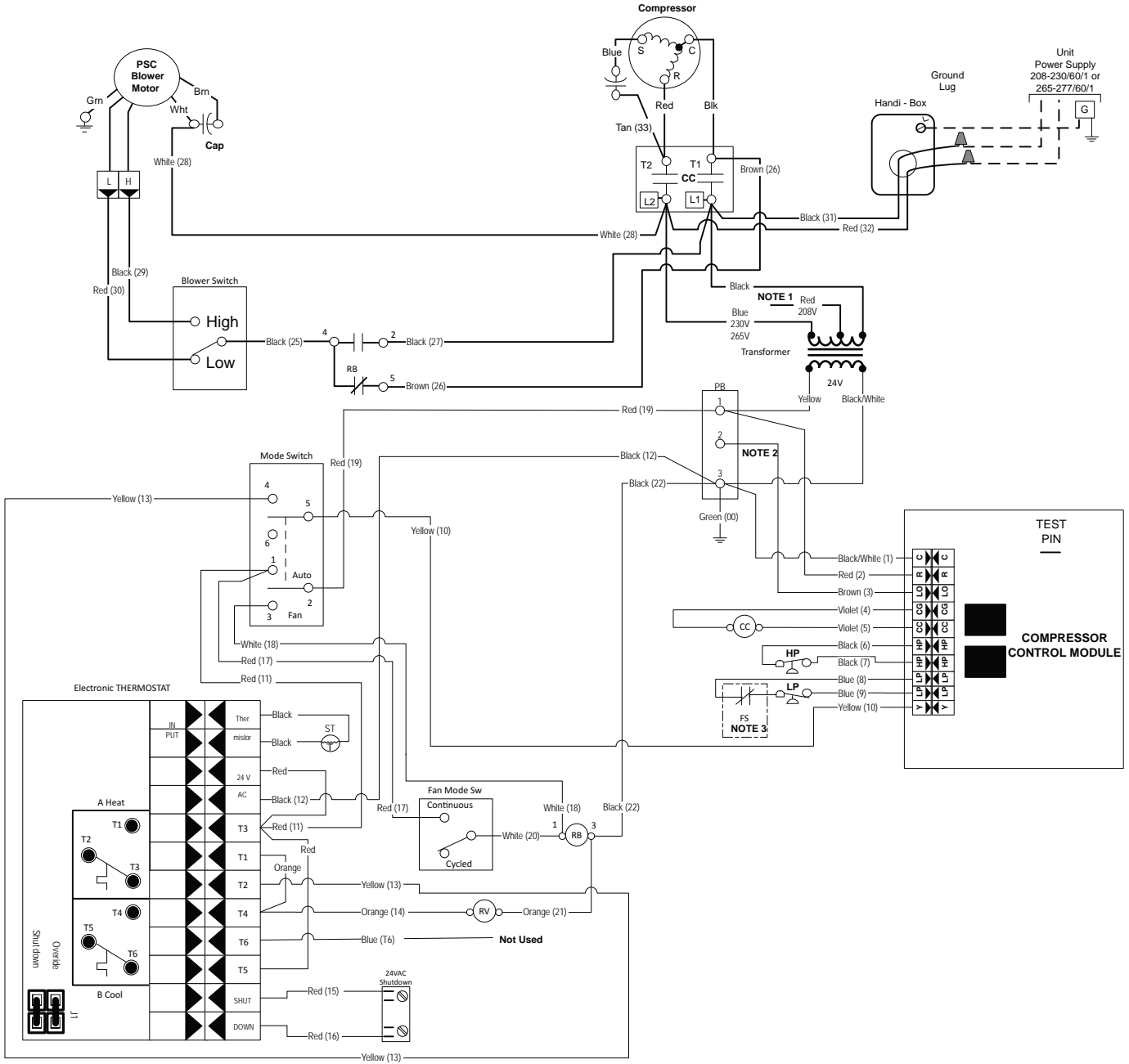
CCM with Remote Thermostat - 208-230-265/60/1



Legend			
Factory low voltage wiring	Quick connect terminal	Wiring lug	Switch - High Pressure
Factory line voltage wiring	Wire nut	Ground	Switch - Low Pressure
Factory low voltage wiring	CC - Compressor Contactor	Relay Contacts - N.O., N.C.	Relay coil
Factory line voltage wiring	DT - Damper Terminal Block		Capacitor
	FS - Freezer Sensing Device		Thermistor
	HP - High Pressure Switch		Temperature Switch
	LP - Low Pressure Switch		
	PB - Power Block		
	RB - Blower Relay		
	RSR - Remote Start/Stop Relay		
	RV - Reversing Valve Coil		
	ST - Entering Air Temperature Sensor		
			Notes:
			1. Switch Red and Blue wires for 208 volt operation.
			2. Terminal C of the 24V PB is used as "L" output for Brown wire 3 for Lockout.
			3. When installed, 24VAC connection for remote start/stop controller option.

Wiring Schematics cont.

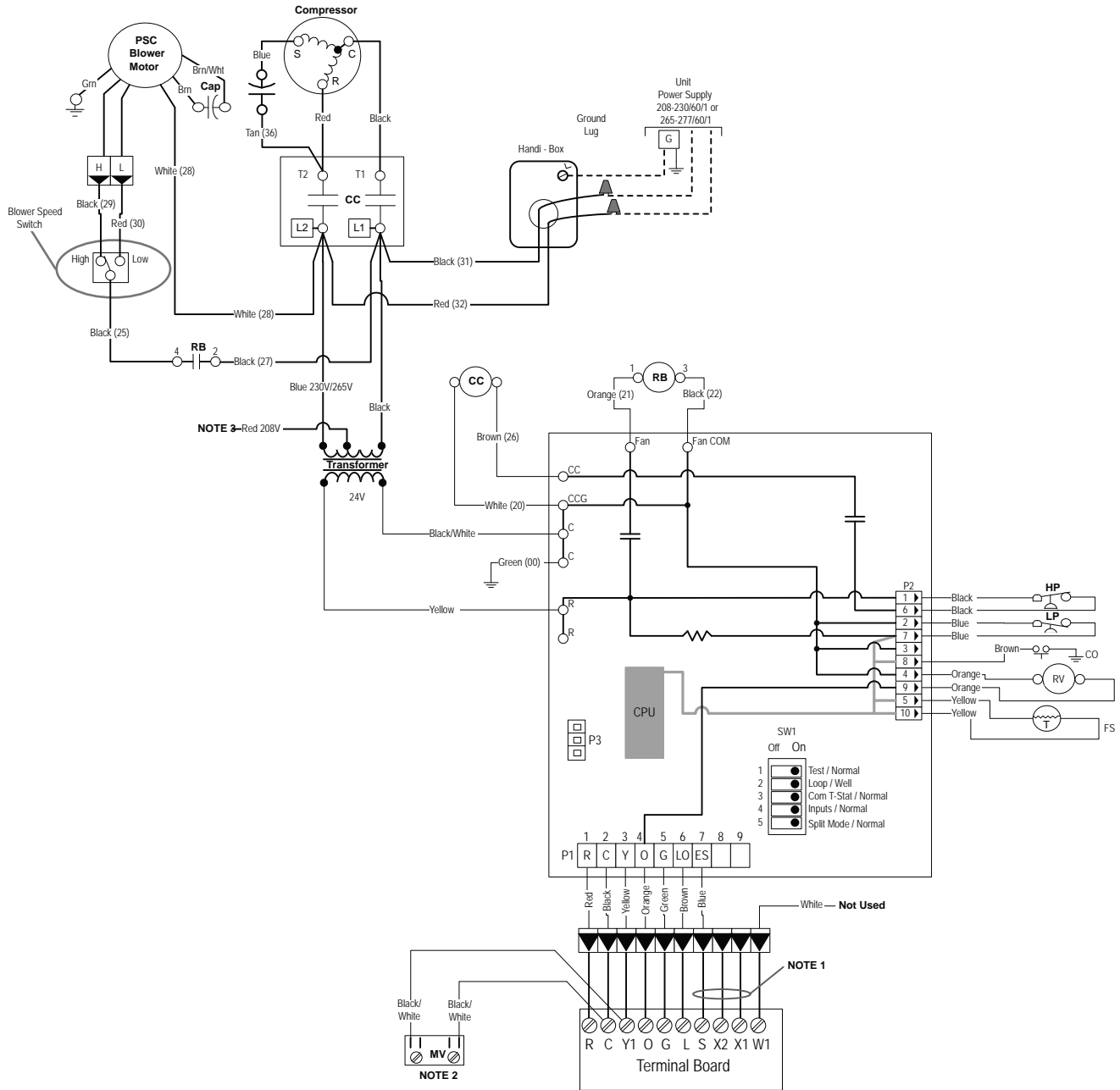
CCM with Unit Mounted Thermostat - 208-230-265/60/1



Legend			
<ul style="list-style-type: none"> Factory low voltage wiring Factory line voltage wiring Field low voltage wiring Field line voltage wiring Quick connect terminal Wire nut 	<ul style="list-style-type: none"> CC - Compressor Contactor DT - Damper Terminal Block FS - Freeze Sensing Device HP - High Pressure Switch LP - Low Pressure Switch PB - Power Block RB - Blower Relay RV - Reversing Valve Coil ST - Entering Air Temperature Sensor 	<ul style="list-style-type: none"> L1 - Field wire lug Earth Ground Relay Contacts - N.O., N.C. Polarized Connector 	<ul style="list-style-type: none"> Switch - High Pressure Switch - Low Pressure Relay coil Capacitor Thermistor Temperature Switch
			<p>Notes:</p> <ol style="list-style-type: none"> Switch Red and Blue wires for 208 volt operation. Terminal C of 24 V PB is used as "L" output for Brown wire 3 for Lockout. Optional field installed freeze sensing device.

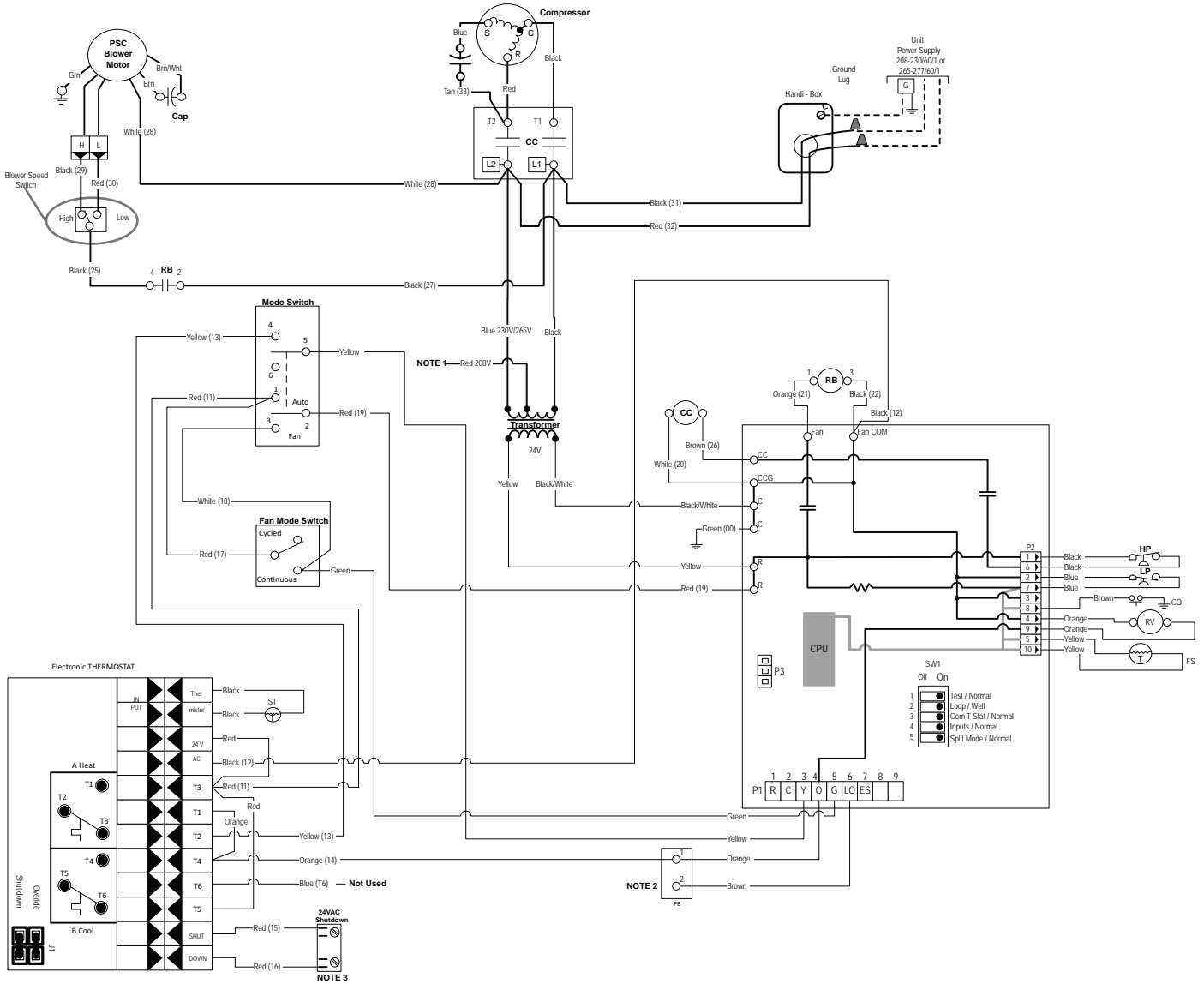
Wiring Schematics cont.

Versatec with Remote Thermostat - 208-230-265/60/1



Wiring Schematics cont.

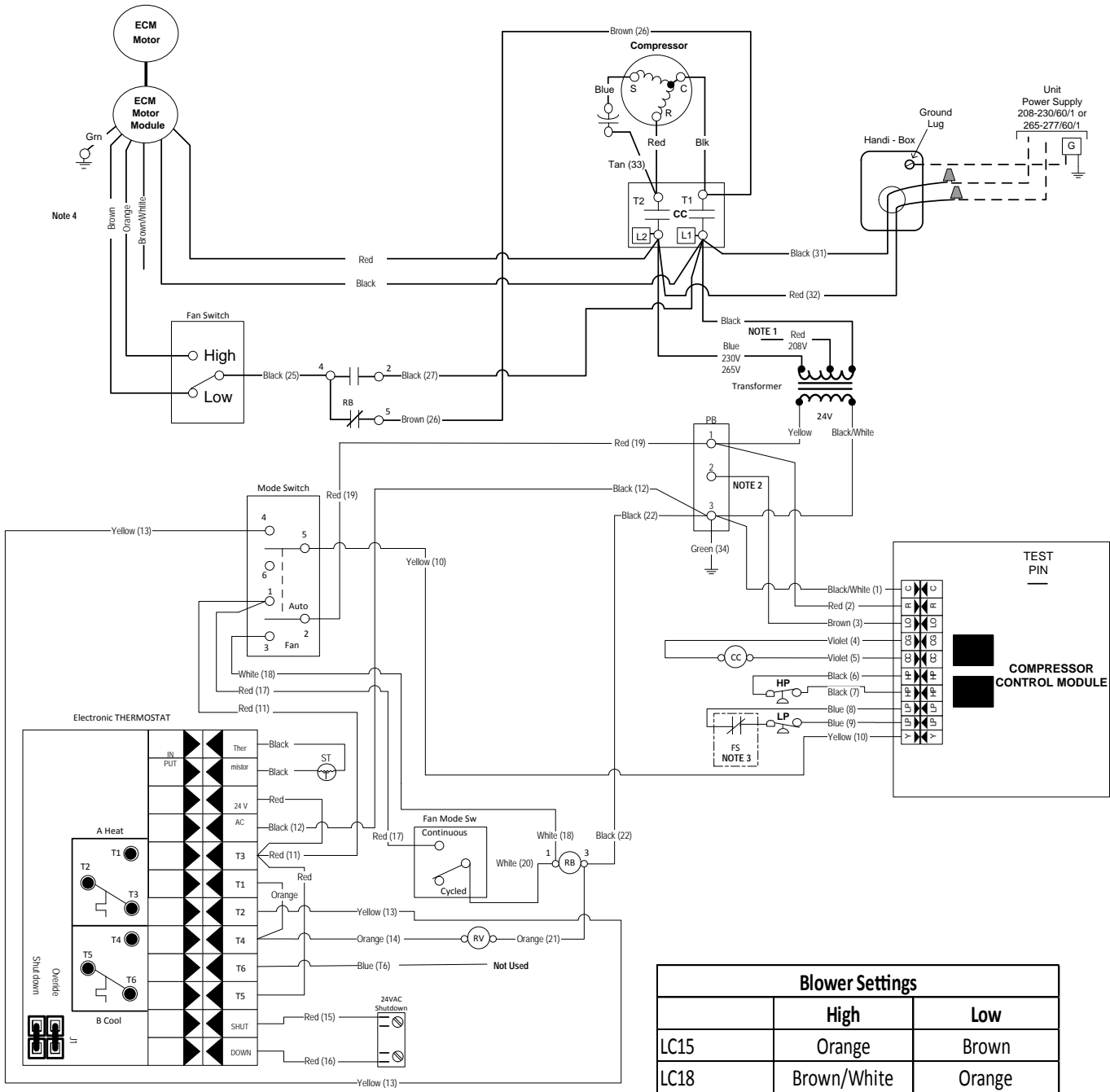
Versatec with Unit Mounted Thermostat - 208-230-265/60/1



Legend			
<p>— Factory low voltage wiring</p> <p>— Factory line voltage wiring</p> <p>..... Factory low voltage wiring</p> <p>----- Factory line voltage wiring</p> <p>○ Quick connect terminal</p> <p>▲ Wire nut</p>	<p>CC - Compressor contactor</p> <p>CO - Condensate overflow</p> <p>FS - Freeze sensing device</p> <p>HP - High pressure switch</p> <p>LP - Low pressure switch</p> <p>RB - Blower power relay</p> <p>RV - Reversing Valve coil</p> <p>SW1 - DIP switch #1</p> <p>ES - Emergency Shutdown</p>	<p>⌓ Wiring lug</p> <p>⏏ Ground</p> <p>⏏ Relay Contacts - N.O., N.C.</p>	<p>⊖ HP Switch - High Pressure</p> <p>⊖ LP Switch - Low Pressure</p> <p>⊖ Relay coil</p> <p>⊖ Capacitor</p> <p>⊖ Thermistor</p> <p>⊖ Temperature Switch</p>
<p>Notes:</p> <ol style="list-style-type: none"> Switch Red and Blue wires for 208 volt operation. Terminal 2 of the 24V PB is used as 'L' output for Brown wire 3 for Lockout. When installed, 24VAC connection for remote start/stop controller option. 			

Wiring Schematics cont.

CCM with ECM and Unit Mounted Thermostat - 208-230-265/60/1

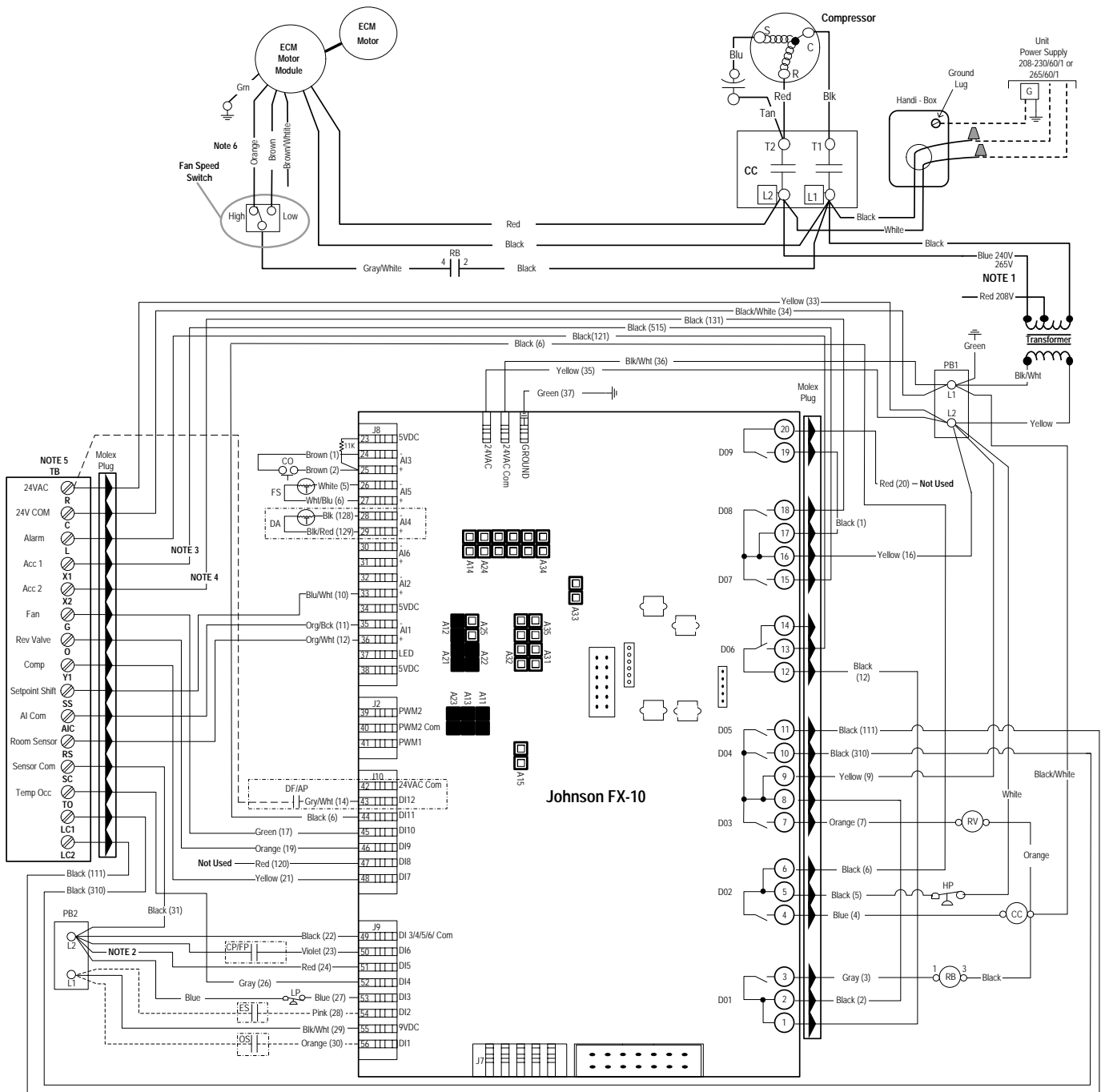


Legend

<ul style="list-style-type: none"> Factory low voltage wiring Factory line voltage wiring Field low voltage wiring Field line voltage wiring Quick connect terminal Wire nut 	<ul style="list-style-type: none"> CC - Compressor Contactor DT - Damper Terminal Block FS - Freeze Sensing Device HP - High Pressure Switch LP - Low Pressure Switch PB - Power Block RB - Blower Relay RV - Reversing Valve Coil ST - Entering Air Temperature Sensor 	<ul style="list-style-type: none"> L1 - Field wire lug Earth Ground Relay Contacts - N.O., N.C. Polarized connector 	<ul style="list-style-type: none"> HP - Switch - High Pressure LP - Switch - Low Pressure Relay coil Capacitor Thermistor Temperature Switch 	<p>Notes:</p> <ol style="list-style-type: none"> Switch Red and Blue wires for 208 volt operation Terminal C of 24 V PB is used as "L" output for Brown wire 3 for Lockout. Optional field installed freeze sensing device. Factory wired. Refer to blower table settings.
--	--	---	--	---

Wiring Schematics cont.

FX10 with ECM and Unit Mounted Thermostat - 208-230-265/60/1



Legend

<p>— Factory low voltage wiring - - - Factory line voltage wiring - - - Field line voltage wiring - - - Field Zone Sensor Wiring</p> <p>● Internal junction ○ Quick connect terminal ▲ Wire nut L1 Field wire lug ⊕ Ground</p>	<p>⎓ Relay Contacts - N.O., N.C. ⊕ Thermistor - Johnson Control ⊕ Relay coil □ Open Jumper ■ Closed Jumper</p>	<p>⊕ Switch - High pressure ⊕ Switch - Low pressure P Polarized connector ⊕ Condensate Overflow</p>	<p>CC - Compressor Contactor CO - Condensate Overflow C/P/F/P - Compressor Proving/Fan Proving DA - Discharge Air Temperature DF/AP - Dirty Filter/Air Proving ES - Emergency Shutdown FS - Freeze Sensing Device HP - High Pressure Switch LP - Low Pressure Switch OS - Occupied Switch RB - Blower Power Replay RV - Reversing Valve Coil TB - Terminal Block</p>
---	--	--	--

Notes:

- 1 - Switch Blue and Red wires for 208V operation
- 2 - Disconnect for 15 degree freeze sensing
- 3 - Acc 1 output is cycled with the compressor.
- 4 - Acc 2 output is cycled with the fan.
- 5 - R, C, Y1, O, and G inputs are for use with a wall mounted thermostat.
- 6 - Factory wired. Refer to blower table settings.

Blower Settings		
	High	Low
LC15	Orange	Brown
LC18	Brown/White	Orange

Wiring Schematics cont.

Versatec Control Board

Normal Mode Control Timing Table

Blower off delay	30 seconds
Compressor on delay	10 seconds
Compressor short cycle delay	5 minutes
Minimum compressor on time	2 minutes (except for fault condition)
High pressure fault recognition delay	Less than 1 second
Low pressure fault recognition delay	30 seconds
Freeze sensing fault recognition delay	30 seconds
Condensate overflow fault recognition delay	30 seconds
Low pressure fault bypass delay	2 minutes (for first fault only, 0 sec after)
Freeze sensing fault bypass delay	2 minutes (for first fault only, 0 sec after)
Power on delay	5 minutes

Test Mode Control Timing Table

Blower off delay	5 seconds
Compressor on delay	2 seconds
Compressor short cycle delay	15 seconds
Minimum compressor on time	5 seconds (except for fault condition)
High pressure fault recognition delay	Less than 1 second
Low pressure fault recognition delay	30 seconds
Freeze sensing fault recognition delay	30 seconds
Condensate overflow fault recognition delay	30 seconds
Low pressure fault bypass delay	0 seconds
Freeze sensing fault bypass delay	0 seconds
Power on delay	15 seconds
Fault off time	5 minutes

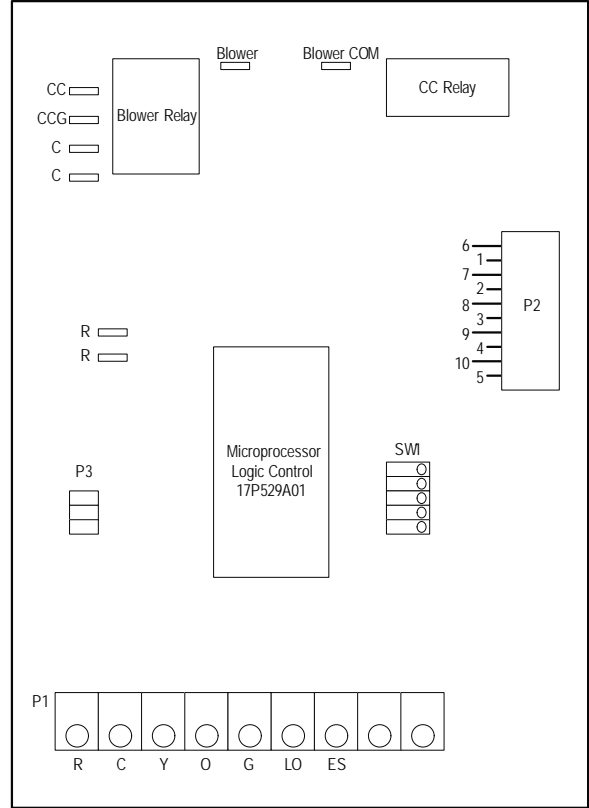
LED Display Mode Table

LED	Normal Display Mode
	SW1-4 On, SW2 Off
Drain	Drain pan overflow lockout
Water Flow	FS thermistor (loop<=15°F, well<=30°F) lockout
High Press	High pressure lockout
Low Press	Low pressure lockout
Air Flow	Not used
Status	Microprocessor malfunction*
DHW Limit	Not Used
HWD	SW2 status (Off=down position, On=up position)

Diagnostic Modes			
LED	Current Fault Status	Inputs	Outputs
	SW1-4 On, SW2 On	SW1-4 Off, SW2 Off	SW1-4 Off, SW2 On
Drain	Drain pan overflow	Y	Compressor
Water Flow	FS thermistor (loop<=15°F, well<=30°F)	G	Blower
High Press	High pressure	O	O
Low Press	Low pressure	ES	ES
Air Flow	Not used	Not Used	Not Used
Status	Not used	Not Used	Not Used
DHW Limit	Not used	Not Used	Not Used
HWD	SW2 in the On position	SW2 in the Off position	SW2 in the On position

*Flashing Status light indicates microprocessor is functioning properly. Solid "on" indicates a microprocessor malfunction.

Versatec Logic Board Physical Layout



Logic Board DIP Switch Settings

Switch	OFF	ON
SW1 - 1	Test Mode - Selected timings sped up to facilitate troubleshooting	Normal Mode - Standard timings
SW1 - 2	Loop - Closed loop freeze sensing setting (15°F)	Well - Open loop freeze sensing setting (30°F)
SW1 - 3	Commercial - Enables NS features when TA32U02 thermostat is used	Normal - Standard thermostat operation
SW1 - 4	IO Display* - Enables Input/Output display on external LED board*	Normal* - Unit status display
SW1 - 5	Split Mode - Dual-Speed-Compressor and with No blower	Normal - Single-Speed Compressor with blower
SW2	OFF* - Normal or Input display mode activated	ON* - Current fault or Output display mode activated

* Refer to LED Display Mode table for position of SW1-4 and SW2

Operational Logic Table

Mode	Inputs	Blower	Comp	RV
Htg	Y	ON	ON	OFF
Clg	Y,O	ON	ON	ON
Blower	G	ON	OFF	OFF

Engineering Guide Specifications

General

Furnish and install WaterFurnace Water Source Heat Pumps, as indicated on the plans. Equipment shall be completely assembled, piped and internally wired. Chassis shall be installed with factory built cabinet or other custom cabinet approved by WaterFurnace engineering. Chassis SHALL NOT be installed without an approved cabinet enclosure. Capacities and characteristics as listed in the schedule and the specifications that follow. The reverse cycle heating/cooling units shall be floor mounted console type with horizontal air inlet and up-flow air discharge. Units shall be AHRI/ISO 13256-1 certified and listed by a nationally recognized safety-testing laboratory or agency, such as ETL Testing Laboratory. Each unit shall be computer run-tested at the factory with conditioned water and operation verified to catalog data. Each unit shall be mounted on a pallet and shipped in a corrugated box or stretch-wrapped. The units shall be designed to operate with entering liquid temperature between 20°F and 120°F [-6.7°C and 48.9°C].

Chassis and Cabinet

The cabinet shall be fabricated from heavy-gauge galvanized steel and finished with a beige textured epoxy powder coating on both sides for added protection. This corrosion protection system shall meet the stringent 1000 hour salt spray test per ASTM B117.

The cabinet shall be easily removable to allow for ease of service to the controls compartment, chassis, and piping. The top of the cabinet and grille is a horizontally flat (optional sloped) surface with a hinged control door cover. The return air filter shall be disposable type media.

The return and supply air sections are insulated with a 1/4 in. (6.4 mm) thick, dual density, 2 lb/ft³ (32 kg/m³) coated mat glass fiber with edges sealed or tucked under flanges to prevent the introduction of glass fibers into the discharge supply air through the aluminum grille. Standard cabinet panel insulation must meet NFPA 90A requirements, air erosion and mold growth limits of UL-181, stringent fungal resistance test per ASTM-C1071 and ASTM G21, and shall meet zero level bacteria growth per ASTM G22. Unit insulation must meet these stringent requirements or unit(s) will not be accepted.

Option: A Super Quiet Sound package shall include multi-density full coverage compressor blanket.

The drain pan shall be of stainless steel construction to inhibit corrosion and bacterial growth. Drain outlet shall be located on pan as to allow complete and unobstructed drainage of condensate. The unit as standard will be supplied with solid-state electronic condensate overflow protection with microprocessor or FX10 option. Mechanical float switches WILL NOT be accepted. Condensate tube shall be constructed of stainless steel and have an internal factory installed condensate trap.

Refrigerant Circuit

All units shall utilize the non-ozone depleting and low global warming potential refrigerant R-410A. All units shall contain a sealed refrigerant circuit including a hermetic

motor-compressor, bi-directional thermostatic expansion valve, finned tube air-to-refrigerant heat exchanger, reversing valve, coaxial tube water-to-refrigerant heat exchanger, and service ports.

Compressors shall be high-efficiency single speed rotary type designed for heat pump duty and mounted on durometer grommets to provide vibration free compressor mounting. Compressor motors shall be single-phase PSC with external overload protection.

The air coil shall be sized for low-face velocity and constructed of lanced aluminum fins bonded to rifled aluminum tubes in a staggered pattern not less than three rows deep for enhanced performance.

Option: AlumiSeal electro-coated air coil.

The coaxial water-to-refrigerant heat exchanger shall be designed for low water pressure drop and constructed of a convoluted copper (cupronickel option) inner tube and a steel outer tube. Refrigerant to air heat exchangers shall utilize enhanced corrugated lanced aluminum fins and rifled aluminum tube construction rated to withstand 600 psig (4135 kPa) refrigerant working pressure. Refrigerant-to-water heat exchangers shall be of copper inner water tube and steel refrigerant outer tube design, rated to withstand 600 psig (4135 kPa) working refrigerant pressure and 450 psig (3101 kPa) working water pressure. The thermostatic expansion valve shall provide proper superheat over the entire liquid temperature range with minimal "hunting." The valve shall operate bi-directionally without the use of check valves.

Option: Cupronickel refrigerant to water heat exchanger shall be of copper-nickel inner water tube and steel refrigerant outer tube design, rated to withstand 600 psig (4135 kPa) working refrigerant pressure and 450 psig (3101 kPa) working water pressure. Water lines shall also be of cupronickel construction.

Option: ThermaShield coated water-to-refrigerant heat exchanger, water lines and refrigerant suction lines shall be insulated to prevent condensation at low liquid temperatures below 50°F.

Blower Motor and Assembly

The blower shall be a direct drive centrifugal type with a dynamically balanced wheel. The housing and wheel shall be designed for quiet, low outlet velocity operation. The blower housing shall be constructed of galvanized steel and shall be removable from the unit for servicing of the blower motor. The blower motor shall be a two-speed PSC or three-speed ECM type and shall be isolated from the housing by rubber grommets. The motor shall be permanently lubricated and have thermal overload protection.

Electrical

A control box shall be located within the unit compressor compartment and shall contain a 50VA transformer, 24 Volt activated, 2 pole compressor contactor, and solid-state controller for complete unit operation. Units shall be name-plated for use with time delay fuses or HACR circuit breakers. Unit controls shall be 24 Volt and provide heating or cooling as required by the remote thermostat/sensor.

Engineering Guide Specifications cont.

Unit mounted controls shall consist of switches for “OFF”, “FAN”, and “AUTO” or “HEAT/COOL”. An additional switch is provided for blower speed setting of “HI” or “LO”. The unit shall be equipped with a blower switch on the side of the control to provide “CONTINUOUS” or “CYCLED” blower operation. “CYCLED” blower will turn the blower on with the compressor. A unit-mounted electronic thermostat with a remote electronic thermistor located in the return air will control compressor operation in heating and cooling modes. Unit mounted thermostat shall be the standard thermostat option. All unit mounted thermostats shall be auto changeover. Manual changeover WILL NOT be accepted. Electromechanical operation WILL NOT be accepted.

Controls

Standard: A compressor control module (CCM) shall be included to disable compressor operation in the event of a trip of any of the safety switches and to send a signal to activate a fault indicator light at the thermostat. The CCM shall be capable of being reset from the thermostat or from the unit main disconnect switch. A terminal block with screw terminals shall be provided for field connection of all low-voltage wiring.

Option: Versatec microprocessor-based controller will provide operational sequencing; high and low pressure switch monitoring, freeze detection, lockout mode control, emergency shutdown mode, short cycle protection, LED mode and fault indicators, fault memory, input and output diagnostics, and field selectable options, and condensate overflow sensing.

Option: FX10 microprocessor-based controller that interfaces with an electronic thermostat to monitor and control unit operation. The control shall provide operational sequencing, blower speed control, high, low and loss of charge pressure monitoring, freeze detection, condensate overflow sensing, lockout mode control, fault memory, field selectable options. The control shall communicate all mode, status, fault and lockout codes to the front end system for fast and accurate equipment diagnosis. The control shall provide fault retry three times before locking out to limit nuisance trips.

Optional FX10 microprocessor control communication protocols: N2, LonWorks, or BACnet

Option: Remote mounted thermostat is available for CCM and Versatec (standard with FX10 option). A terminal block with screw terminals will be provided for field control wiring.

Piping

Supply and return water connections shall be 1/2 in. [12.7 mm] FPT copper threaded fittings. All water piping shall be insulated to prevent condensation at low liquid temperatures.

A stainless steel tube stubbed out from the chassis is provided for condensate drain attachment. A short piece of polyvinyl hose is supplied to assist in adapting to drain.

Accessories

Hose Kits – Ball Valves (field-installed)

A flexible steel braid hose featuring Kevlar® reinforced EPDM core with ANSI 302/304 stainless steel outer braid and fire rated materials per ASTM E 84-00 (NFPA 255, ANSI/UL 723 & UBC 8-1). Ball valve at one end; swivel connector with adapter at the other end (swivel to adapter connection via fiber or EPDM gasket). Swivel connection provides union between heat pump and piping system. The hoses feature brass fittings, stainless steel ferrules. A full port ball valve shall be provided with integral P/T (pressure/temperature) port on supply hose. Specifications: Temperature range of 35°F [2°C] to 180°F [82°C]. Max. working pressure of 400 psi [2757 kPa] for 1/2 in. and 3/4 in. hose kits; max. working pressure of 350 psi [kPa] for 1 in. and 1-1/4 in. hose kits.

Hose Kits – Automatic Balancing and Ball Valves (field-installed)

A flexible steel braid hose featuring Kevlar® reinforced EPDM core with ANSI 302/304 stainless steel outer braid and fire rated materials per ASTM E 84-00 (NFPA 255, ANSI/UL 723 & UBC 8-1). Ball valve at one end; swivel connector with adapter at the other end (swivel to adapter connection via fiber or EPDM gasket). Swivel connection provides union between heat pump and piping system. The hoses feature brass fittings, stainless steel ferrules. A full port ball valve shall be provided with integral P/T (pressure/temperature) port on supply hose and automatic balancing valve with integral P/T ports and full port ball valve on return hose.

Specifications:

- Temperature range of 35°F [2°C] to 180°F [82°C].
- Max. working pressure of 400 psi [2757 kPa] for 1/2 in. and 3/4 in. hose kits; max. working pressure of 350 psi [2413 kPa] for 1 in. and 1-1/4 in. hose kits.
- Minimum burst pressure of four times working pressure.

Hose Kits – Automatic Balancing and Ball Valves with ‘Y’ strainer (field-installed)

A flexible steel braid hose featuring Kevlar® reinforced EPDM core with ANSI 302/304 stainless steel outer braid and fire rated materials per ASTM E 84-00 (NFPA 255, ANSI/UL 723 & UBC 8-1). Ball valve at one end; swivel connector with adapter at the other end (swivel to adapter connection via fiber or EPDM gasket). Swivel connection provides union between heat pump and piping system. The hoses feature brass fittings, stainless steel ferrules. A “y” strainer is provided on one end for fluid straining and integral “blowdown” valve. A full port ball valve shall be provided with integral P/T (pressure/temperature) port on supply hose and automatic balancing valve with integral P/T ports and full port ball valve on return hose.

Specifications:

- Temperature range of 35°F [2°C] to 180°F [82°C].
- Max. working pressure of 400 psi [2757 kPa] for 1/2 in. and 3/4 in. hose kits; max. working pressure of 350 psi [2413 kPa] for 1 in. and 1-1/4 in. hose kits.
- Minimum burst pressure of four times working pressure.

Notes

Revision Guide

Pages:	Description:	Date:	By:
All	Updated with All-Aluminum Air Coils	03 Mar 2014	DS
All	Added 15 & 18 Models	09 Oct 2013	DS
42	Added Revision Table	09 Oct 2013	DS



Manufactured by
WaterFurnace International, Inc.
9000 Conservation Way
Fort Wayne, IN 46809
www.waterfurnace.com

Product: **Envision Series Low Sill Console**
Type: Geothermal/Water Source Heat Pump
Size: 0.75-1.0 Ton
Document: Specification Catalog

SC1012CNA 03/14